



AUSTRALIA'S ONLY  
**10 YEAR**  
300,000KM WARRANTY  
WHEN SERVICING WITH NISSAN\*



**X-TRAIL** Defy Ordinary



# Nissan X-TRAIL. Defy ordinary.

Introducing X-TRAIL, Nissan's mid-sized family adventure SUV, available with either e-POWER\* – a technology that goes beyond traditional hybrid powertrains for a smooth and quiet EV-like driving experience, or a traditional and efficient 2.5L petrol engine.

For superior control, choose e-POWER\* which includes the electric-drive four-wheel-control technology, e-4ORCE\*.

X-TRAIL is a spacious SUV with up to seven seats<sup>^</sup>, and everything you need to keep your family safe and comfortable with advanced Nissan Intelligent Mobility safety technologies. With cutting-edge connectivity to keep everyone entertained, X-TRAIL makes family friendly adventures a breeze.



\* Cover page: Up to 10 years or 300,000km (whichever occurs first), when servicing at authorised Nissan dealers. Full terms at [Nissan.com.au/warranty](https://www.nissan.com.au/warranty).  
X-TRAIL Ti-L e-POWER model with 20" alloy wheels, premium paint and black painted roof shown throughout (unless otherwise stated).

\* Available on ST-L, Ti & Ti-L e-POWER models only.  
^ Available on 2.5L ST & ST-L 4x4 models only.



# Never compromise on style in the Nissan X-TRAIL

Get noticed wherever you go with sleek LED headlights, distinctive and imposing front air vents and robust, yet crafted lines. Up front, the unmistakable Nissan V-motion grille bears the familiar signature of Nissan's exciting design DNA, to show that this family crossover refuses to blend into the background.



20" alloy wheels^



Rear LED signature lamps



Strong front fascia



Front LED signature headlamps



e-POWER badge\*



e-4ORCE badge\*

^Available on Ti-L e-POWER model only.  
\* Available on e-POWER models only.





## Close the door on the chaos outside

With three large interior display screens to supplement your drive, you're guaranteed to experience Nissan technology at its best.

Enjoy a 12.3" TFT Advanced Drive-Assist Display instrument cluster\*, 12.3" touchscreen display and a 10.8" Head-Up Display\* as you settle into your comfortable, premium quilted Nappa leather-accented\* seats.

Wondering where to place your belongings? Don't miss the storage space beneath the floating centre console. Inside the X-TRAIL's cabin, it's all about quality details – the relaxing atmosphere of ambient lighting#, the soft feel of premium materials and the seamless convenience of wireless Apple CarPlay®\*, wireless Android Auto™\* and wireless smartphone charging°.



12.3" TFT Advanced Drive-Assist Display instrument cluster\* and 10.8" Head-Up Display\*



12.3" touchscreen display\* with wireless Apple CarPlay®\* and wireless Android Auto™\*



Nappa leather-accented\* seats



Ambient door trim lighting on Ti-L



Wireless smartphone charging°

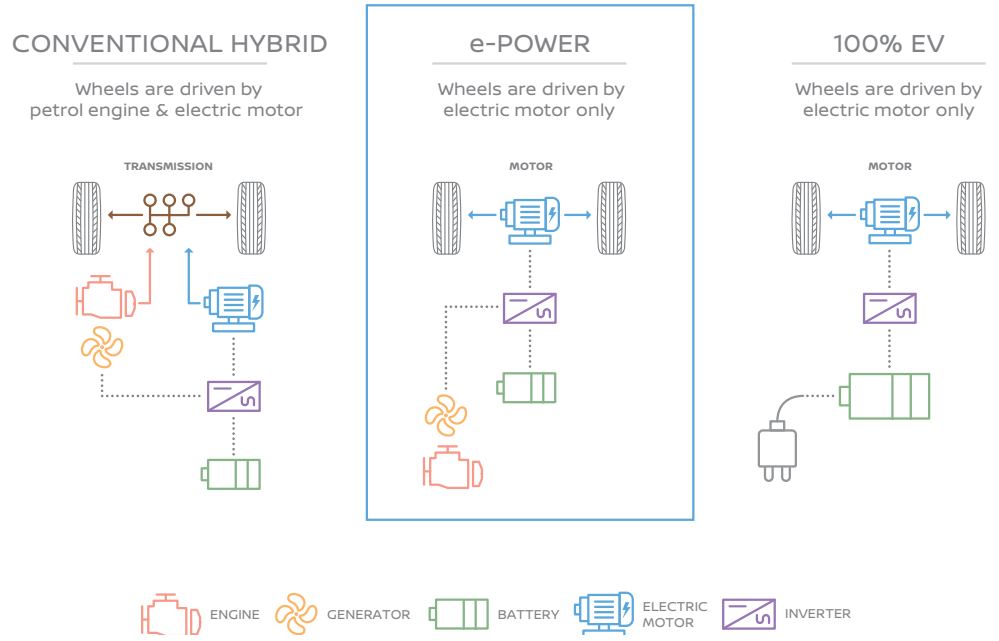
\* Available on Ti & Ti-L models only.  
\* Leather-accented features and upholstery may contain synthetic material. Minor trim variations may occur from time to time. Nappa leather-accented seats available on Ti-L models only.  
\* CarPlay is a registered trademark of Apple Inc. Android Auto is a trademark of Google LLC. Compatible device required. Wired connections require a USB connection.  
\* Available on Ti & Ti-L models only.  
° Compatible device required.





# Nissan e-POWER: The hybrid reinvented.

With e-POWER\*, pioneering doesn't have to pause. e-POWER\* is an innovative EV-like system which includes two electric motors, a petrol engine and a lithium-ion battery to achieve an EV-like driving experience. The result is almost instant acceleration response and a quiet driving sensation without the need to plug in or recharge. Just exhilarating and stress-free driving with no compromise on fuel economy.



## Simplify your drive with e-Pedal Step^

Experience a more intuitive way to drive. e-Pedal Step^ gives you the option to accelerate and decelerate effectively with just the accelerator pedal at speeds above 10km/h, leaving the brake pedal for harder braking or coming to a complete stop.

\* e-POWER is available on ST-L, Ti & Ti-L models only.  
^ e-Pedal Step may not be suitable under all driving conditions, correct operation is the responsibility of the driver.  
Available on e-POWER models only.



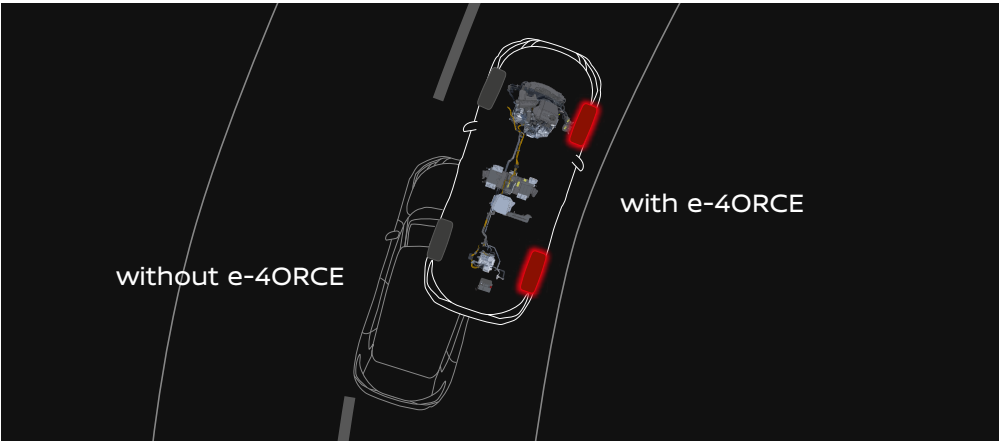
# Elevate your 4x4 experience with e-4ORCE

Adventures are not meant to have boundaries. Take on new terrains in confidence with Nissan X-TRAIL e-POWER's electric-drive four-wheel-control technology, e-4ORCE. e-4ORCE delivers the perfect balance between powerful and unprecedented control, with a smooth ride for all thanks to superior handling on any surface. Dial up the adventure even further with up to five selectable drive and terrain modes^, including Auto, Sport, Eco, Off-Road and Snow.

e-4ORCE is paired with e-POWER and available on ST-L, Ti & Ti-L models.



Five selectable drive and terrain modes^



^ 4x4 models only.







2.5L petrol engine offering excitement, without compromise

X-TRAIL is offered with a 2.5L four cylinder petrol engine with 135kW of power and 244Nm of torque. Available in standard front-wheel-drive or optional Intelligent 4x4\*, all models are fitted with a Continuously Variable Transmission along with steering wheel mounted paddle shifters to enhance your driving experience. 2.5L X-TRAIL models are capable of towing up to 2,000kg maximum braked towing capacity†.



\* Available on 4x4 models only.  
† Towing capacity is subject to towbar/towball capacity and is based on the fitment of a Genuine Nissan towbar. Towing capacity figure described is a maximum figure. Actual towing capacity depends on the laden mass of the vehicle, driving conditions, fitment of any accessories or towing equipment limitations including the maximum towball download.  
X-TRAIL Ti-L 2.5L model with premium paint and black painted roof shown.



# Safety at heart

The Nissan X-TRAIL is equipped with advanced Nissan Intelligent Mobility technologies that combine to help you see more, sense more and can even step in to respond to potential hazards.

ProPILOT<sup>Δ</sup> allows you to enjoy your highway commute by automatically keeping up with traffic flow and helping keep you centred in your lane through a combination of automated steering, acceleration and braking. This intelligent safety technology helps ease driver workload in highway traffic and long commutes at the push of a button.



**INTELLIGENT FORWARD COLLISION WARNING<sup>Δ</sup>**  
Keeps an eye on up to two vehicles ahead of X-TRAIL. If the system detects sudden deceleration ahead, it will give you audible and visual warnings to respond and slow down.



**INTELLIGENT EMERGENCY BRAKING<sup>Δ</sup>**  
By monitoring speed and distance between X-TRAIL and the vehicle ahead, Intelligent Emergency Braking<sup>Δ</sup> can automatically engage the brakes to help avoid a frontal collision or lessen the severity of an impact. And when it detects a pedestrian at the crosswalk, it can stop you in your tracks. The technology also features cyclist and junction detection for added piece of mind.



**INTELLIGENT REAR AUTOMATIC BRAKING<sup>Δ</sup>**  
Helps you back-up with confidence by watching behind you during reversing manoeuvres. If a large stationary object is detected behind your vehicle, the system can automatically engage the brakes to help avoid a rear collision or lessen the severity of an impact.



**INTELLIGENT CRUISE CONTROL<sup>Δ</sup>**  
Keeps a set distance between X-TRAIL and the vehicle ahead by measuring space and controlling acceleration and deceleration to automatically maintain a suitable following distance within your set speed.



**INTELLIGENT LANE INTERVENTION<sup>Δ</sup>**  
Avoid unintentional lane departure. When lane markings are clear, Intelligent Lane Intervention<sup>Δ</sup> can keep you centred in your lane and can tap the brakes to help gently guide you back.

<sup>\*</sup> Not available on ST.  
<sup>Δ</sup> ProPILOT cannot prevent collisions. It is the driver's responsibility to be in control of the vehicle at all times. Always monitor traffic conditions and keep both hands on the steering wheel. System operates only when lane markings are detected. Does not function in all weather, traffic and road conditions. System has limited control capability and the driver may need to steer, brake or accelerate at any time to maintain safety. See Owner's Manual for safety information. Not available on ST.  
<sup>Δ</sup> Driver's aid(s) only, not a substitute for safe driving. Always monitor your surroundings.





# All-new X-TRAIL technology



### T-JUNCTION VIEW\*

Using the front camera to extend your line of sight, the revolutionary T-Junction View provides an ultra-wide perspective, giving you a safe, early look at oncoming traffic and drastically reducing blind-spot anxiety.



### INTELLIGENT 8 POINT 3D AROUND VIEW MONITOR\*

An advanced monitoring system that stitches together camera feeds with 8-point coverage to give you a crystal-clear, 360-degree, bird's eye view of your vehicle's surroundings. Enhance your parking experience with precise, real-time visual checks on every corner and side.



### SKELETON HOOD VIEW\*

Know exactly where you stand without ever turning your head. Skeleton Hood View overlays a unique, translucent outline onto the camera feed, helping you visualise your car's exact physical boundaries and alignment.



## NissanConnect Services

NissanConnect Services app is compatible with most iOS and Android smartphones. Please refer to the Google Play store for Android devices and Apple App Store for Apple devices for compatibility. Make sure that your device has the latest software update before downloading the NissanConnect Services app.

Your new vehicle comes with a complimentary 3-year subscription to NissanConnect Services, a subscription-based service. Once the initial 3-year period ends, a fee will apply and the service will not be automatically renewed unless you choose to take up a subscription. Please speak with your dealer for details on subscription options and pricing, noting that options and pricing may be subject to change.



**ENJOY SIMPLE INTERACTION**  
Benefit from smartphone mirroring and advanced voice control.



**PLAN AND REVIEW JOURNEYS**  
Enjoy door-to-door navigation and driving analysis.



**CONTROL CAR FEATURES REMOTELY**  
Control functions such as car lights and horn, remotely.



**MONITOR YOUR CAR FROM ANYWHERE**  
Check your car's conditions, set usage alerts, and receive support.

\* AVM, Skeleton Hood View and T-Junction View are driver's aids only and should not be used as substitutes for safe driving practices. AVM and Skeleton Hood View cannot completely cover blind spots and may not detect moving objects. Always check surroundings before moving vehicle.

\*\* Features only available on ST-L grades.



# Discover the details that make a difference

Details designed to make your journeys smoother. X-TRAIL is available with tri-zone climate control\* for optimal cabin comfort, along with built-in rear door sunshades^ that neatly roll away.

When it comes to cargo, five-seat models feature Nissan's Divide-N-Hide configurable cargo system~, a system of adaptable boards to contain items of various shapes and sizes. Smaller items can be retained in the under-shifter storage, or the butterfly opening centre console for easy access for second row passengers.



Floating centre console with under-shifter storage



Butterfly opening centre console



Tilt & slide power sunroof with panoramic glass roof\*



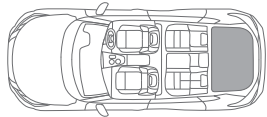
Built-in rear door sunshades^



Second row USB charging ports



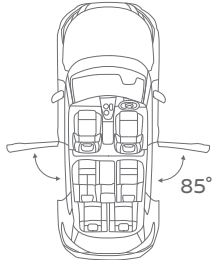
Tri-zone climate control\*



Cargo capacity: second row upright, to roof line.

**e-POWER**  
5-seat 575L

**2.5L petrol**  
5-seat 585L  
7-seat 465L



85° rear door opening



\* Available on Ti & Ti-L models only.  
^ Available on N-TREK & Ti-L models only.  
~Not available on ST models. Not available on ST-L & N-TREK 7-seat models.



# ST



17" alloy wheel  
Standard on ST grades

## Standard key features:

- Intelligent Emergency Braking with junction assist & pedestrian/cyclist detection
- Intelligent Rear Automatic Braking
- Intelligent Blind Spot Intervention
- Intelligent Lane Intervention
- Intelligent Cruise Control
- Rear view camera & rear parking sensors
- Traffic Sign Recognition
- High Beam Assist
- 7.0" TFT Advanced Drive-Assist Display instrument cluster
- NissanConnect Services
- 12.3" touchscreen display
- Wireless Apple CarPlay®^ & wireless Android Auto™^
- 4 USB ports (2 USB-A / 2 USB-C)
- 17" alloy wheels
- LED head and tail lights
- Electronic shift by wire
- Electric park brake
- Paddle shifters
- Power adjustable, power folding, heated door mirrors
- Automatic rain-sensing front wipers

## Optional features

- Intelligent 4x4 with 5 drive and terrain modes
- 7-seat capacity (4x4 models only)

^ CarPlay is a registered trademark of Apple Inc. Android Auto is a trademark of Google LLC. Compatible device required. Wired connections require a USB connection.  
^ ProPILOT cannot prevent collisions. It is the driver's responsibility to be in control of the vehicle at all times. Always monitor traffic conditions and keep both hands on the steering wheel. System operates only when lane markings are detected. Does not function in all weather, traffic and road conditions. System has limited control capability and the driver may need to steer, brake or accelerate at any time to maintain safety. See Owner's Manual for safety information.  
\* Leather-accented features and upholstery may contain synthetic material. Minor trim variations may occur from time to time.  
° Compatible device required.

# ST-L



18" alloy wheel  
Standard on ST-L grades

2.5L model shown

## ST-L includes ST features plus/or:

- ProPILOT^
- Digital Around View Monitor (3D 8pt fixed) with Skeleton Hood and T-Junction Views
- Wireless smartphone charger°
- Leather-accented\* seat trim
- Leather-accented\* steering wheel
- 18" alloy wheels
- Dual-zone automatic climate control
- Privacy glass (second row & rear windows)
- Front parking sensors
- Automatic dimming internal rear view mirror
- 10-way power adjustable driver/passenger seat (including 2-way power lumbar)
- Divide-N-Hide configurable cargo system (5-seat models only)
- 40/20/40 split folding second row seat
- Sliding second row seats
- Heated front seats
- Leather-accented\* seat trim

## Optional features

- e-POWER with e-4ORCE
- Intelligent 4x4 with 5 drive and terrain modes (2.5L models only)
- 7-seat capacity (4x4 models only)



# Ti



2.5L model shown



19" alloy wheel  
Standard on Ti grades  
Standard on Ti-L 2.5L

# Ti-L



2.5L model shown  
with 19" alloy wheels



19" alloy wheel  
Standard on Ti-L 2.5L



20" alloy wheel  
Standard on Ti-L e-POWER

## Ti includes ST-L features plus/or:

- Intelligent 4x4 with 5 drive and terrain modes
- 12.3" TFT Advanced Drive-Assist Display instrument cluster
- 10.8" Head-Up Display
- Intelligent Rear View Mirror
- 19" alloy wheels
- Tilt & slide power sunroof with panoramic glass roof
- Tri-zone automatic climate control
- Adaptive Driving Beam headlights
- Automatic rain-sensing front wipers
- Motion sensing power tailgate
- Built-in rear door sunshades

## Optional features

- e-POWER with e-4ORCE
- Black painted roof<sup>#</sup>

## Ti-L includes Ti features plus/or:

- Quilted Nappa leather-accented\* seat trim
- Bose® 10 speaker premium audio system
- Heated steering wheel
- Heated second row outboard seats
- Ambient interior lighting (console tray & door trim)
- Memory system (driver seat & door mirrors)
- External rear vision mirrors with tilt to reverse

## e-POWER only

- 20" alloy wheels standard

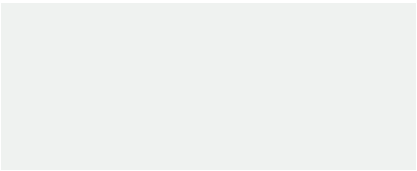
## Optional features

- e-POWER with e-4ORCE
- Black painted roof<sup>#</sup>
- Chestnut quilted Nappa leather-accented\* seat trim

<sup>\*</sup> Leather-accented features and upholstery may contain synthetic material. Minor trim variations may occur from time to time.  
<sup>#</sup> Black painted roof available at additional cost.



# Exterior paint options



Everest White



Scarlet Ember



Gun Metallic#



Diamond Black#



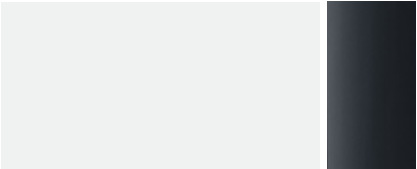
Champagne Silver#



Ceramic Grey#



Deep Ocean Blue#



Everest White with black roof~



Champagne Silver with black roof~



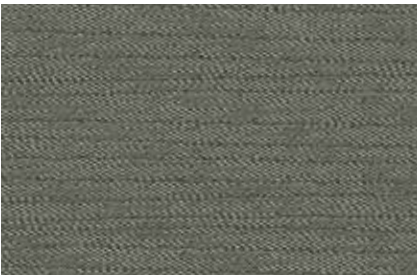
Ceramic Grey with black roof~



Deep Ocean Blue with black roof~

# Premium paint available at extra cost. In some cases, the printed colours may vary from the actual paint colours.  
~ Black painted roof available on Ti & Ti-L models at additional cost.

# Interior trim options



Light charcoal seat trim. Available on ST.



Black genuine leather-accented\* seat trim.  
Available on ST-L & Ti.



Black quilted Nappa leather-accented\* seat trim.  
Available on Ti-L.



Chestnut quilted Nappa leather-accented\* seat trim.  
Available on Ti-L.

\* Leather-accented features and upholstery may contain synthetic material. Minor trim variations may occur from time to time.



# MYNISSAN OWNERSHIP

A complete ownership experience to help you get the most out of your Nissan. It includes the following:

AUSTRALIA'S ONLY  
**10 YEAR**  
300,000KM WARRANTY  
WHEN SERVICING WITH NISSAN\*

**10 YEAR**  
300,000 KILOMETRE WARRANTY  
WHEN SERVICING WITH NISSAN^

Receive assurance with up to 10 year/300,000 kilometre warranty (whichever occurs first)\*.

**10 YEAR**  
24/7 ROADSIDE ASSISTANCE  
WHEN SERVICING WITH NISSAN†

No matter where you're planning to journey, you'll have the peace of mind of knowing that if you lock your keys in the car, have a flat tyre or battery, or run out of fuel, we'll help get you back on the road at no charge†.

**5 YEAR**  
NISSAN FLAT PRICE SERVICE\*

All Nissan vehicles first registered from 1 January 2025 are eligible for Nissan Flat Price Service. As part of this servicing program, we've set one flat price you'll pay for every service for the first five services according to your vehicle's service schedule.\*

## FACTORY-TRAINED TECHNICIANS

Using dedicated diagnostic equipment and Nissan Genuine Parts they'll keep your vehicle in top condition.

## NISSAN GENUINE ACCESSORIES

Your Nissan Dealer can show you a variety of Nissan Genuine Accessories to protect, enhance and personalise your Nissan.

## OPTIONAL PRE-PAID MAINTENANCE PLANS

Our optional Pre-paid Maintenance Plan takes the hassle out of budgeting for scheduled service costs over time, instead offering you the convenience of a one-off payment when you purchase your new Nissan vehicle.

## FINANCIAL SERVICES

Choose from a range of finance options at very competitive rates and terms, as well as various insurance solutions to protect you and your vehicle.

For more information please visit [Nissan.com.au/owners](https://www.nissan.com.au/owners), ask your Nissan Dealer or phone 1800 035 035 during normal AEST business hours.

^ Whichever occurs first, when servicing at authorised Nissan dealers. Where vehicle is not serviced through Nissan or ceases to be serviced at Nissan, additional years will not be added so 10 year/300,000km warranty (whichever occurs first) may not apply. Warranty protection will remain 5 year/unlimited km warranty, plus any additional service activated years previously added. Conditions apply. Full terms at [Nissan.com.au/warranty](https://www.nissan.com.au/warranty).

NOTE: Our goods come with guarantees that cannot be excluded under the Australian Consumer Law. You are entitled to a replacement or refund for a major failure and compensation for any other reasonably foreseeable loss or damage. You are also entitled to have the goods repaired or replaced if goods fail to be of acceptable quality and the failure does not amount to a major failure.

† When servicing at authorised Nissan dealers. Where vehicle is not serviced through Nissan or ceases to be serviced at Nissan, additional years will not be added, so 10 year/300,000km roadside assist (whichever occurs first) may not apply. Roadside assist duration will remain as 1 year/unlimited kilometre roadside assist, plus any service activated years previously added. Conditions apply. Full terms at [Nissan.com.au/roadsideassistance](https://www.nissan.com.au/roadsideassistance).

\* Ask your Nissan Dealer to explain exactly what items are covered in each Scheduled Service. Applies for the first 5 services or 5 years, whichever occurs first. Some exclusions apply. Ask your Nissan Dealer or view full terms at [Nissan.com.au/service](https://www.nissan.com.au/service).

All illustrations, information and specifications presented and referred to in this brochure were correct at the time this brochure was approved for printing. The colours in the photographs may vary from actual colours. However, Nissan Motor Co (Australia) Pty. Ltd. reserves the right, subject to the laws of Australia and/or the regulations of any competent authority which may apply from time to time, at its discretion at anytime and without prior notice to discontinue or change the models, features, specifications, designs and prices of the products referred to in this brochure and any optional equipment therefore without incurring any liability whatsoever to any purchaser or prospective purchaser of any such products. Some of the items referred to here are optional at extra cost. Some options may be required in combination with other options. Always consult your Nissan Dealer for the latest information on models, specifications, features, prices, options and availability. Nissan Motor Co (Australia) Pty. Ltd. ACN 004 663 156.







Your weekend adventure awaits

# Nissan Genuine Accessories

Personalise your Nissan X-TRAIL with our range of Nissan Genuine Accessories, designed to add style, functionality and protection.



A



B



C



D



E



E



F



G

- A Seat covers
- B Cargo barrier
- C Reversible boot liner
- D Carpet mates
- E All weather mats
- F Roof bars
- G Ground welcome light

## Why Choose Genuine?



### Safety

Your safety is our priority. That's why we put Nissan Genuine Accessories through thousands of hours of testing.



### Reliability

Nissan Genuine Accessories are made for reliability and are covered by the Nissan New Vehicle Warranty.<sup>^</sup>



### Perfect Fit

Crafted to fit your Nissan perfectly, Nissan Genuine Accessories ensure optimum performance.



### Future Proof

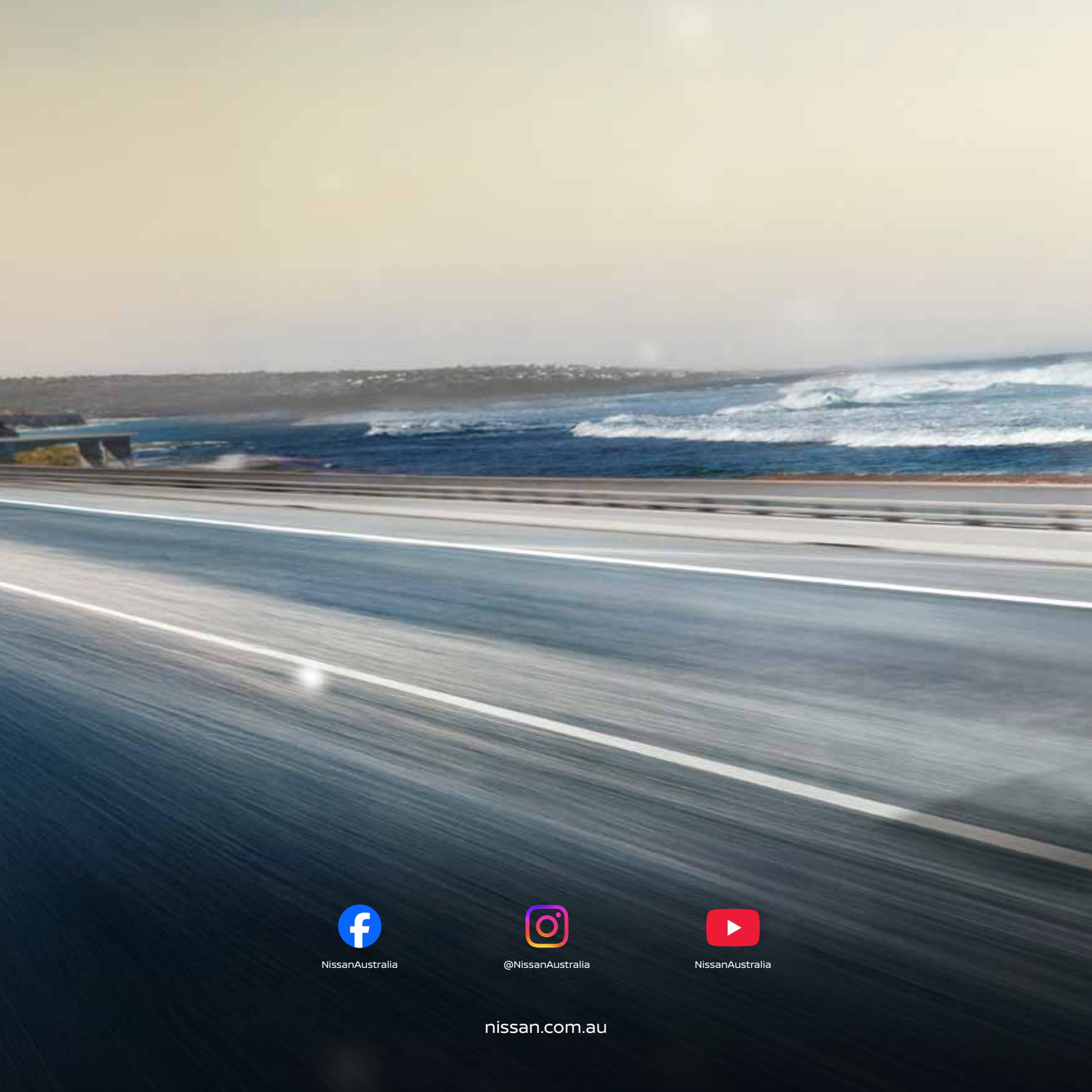
Nissan Genuine Accessories keep your vehicle complete and help maintain its resale value.

<sup>^</sup> When Nissan Genuine Accessories are purchased and fitted at the time of new vehicle purchase, by an Authorised Nissan Dealer, they are covered by Nissan's up to 10 year / 300,000 kilometre warranty (whichever occurs first). If purchased after delivery of the vehicle and fitted by an Authorised Nissan Dealer, Nissan Genuine Accessories will be covered by the greater of: (i) Nissan's 1 year / 20,000 kilometre warranty (whichever occurs first) or (ii) the remainder of Nissan's up to 10 year / 300,000 kilometre new vehicle warranty<sup>†</sup> (whichever occurs first). Accessories purchased over the counter are covered from sale date by Nissan's 1 year / 20,000km warranty (whichever occurs first).

<sup>†</sup> Whichever occurs first, when servicing at authorised Nissan dealers. Where vehicle is not serviced through Nissan or ceases to be serviced at Nissan, additional years will not be added so 10 year/300,000km warranty (whichever occurs first) may not apply. Warranty protection will remain 5 year/unlimited km warranty, plus any additional service activated years previously added. Conditions apply. Full terms at [Nissan.com.au/warranty](https://www.nissan.com.au/warranty).

Accessory Pack contents may differ depending on model grade. Additional costs may apply. Recommended fit price may differ between Dealers. Please refer to your Nissan Dealer for model applicability & recommended fit price.





NissanAustralia



@NissanAustralia



NissanAustralia

[nissan.com.au](http://nissan.com.au)