

FIAT PROFESSIONAL

# DUCATO

BASE FOR MOTORHOMES



LEADER IN FREEDOM

**FIAT**  
PROFESSIONAL





**Change the way  
you feel your freedom.**

It's time to enjoy a new freedom  
and experience new unexpected adventures.

Leave the beaten paths and discover how amusing is to  
experience the new ones. With Ducato Fiat Professional as  
a base for your motorhome, forget the monothony and  
feel free to enjoy the life of a genuine traveler whenever  
you want and wherever you are.



# Ducato base for motorhomes.

An authentic show in the nature.

The awareness to have the best chassis for motorhomes on the market combined with the most complete range of customer services and an excellent comfort, lets you be the protagonist of the scenarios you go through. Ducato, born from the proven cooperation with leading manufacturers of motorhomes and chosen by the vast majority of European customers, is at the top of its category on the market.

The same is true for the specifications of the base and the Euro 6d-FINAL engines, further improving fuel efficiency and reducing the environmental impact while perfectly combining performance and consumption in relation to the type of use. Ducato offers more technology, more comfort and more value. Its performance is enhanced in terms of reliability and handling by the refined 9-speed automatic transmission; innovative Advanced Driving Assistance Systems allow you to explore new destinations in complete safety and confidence.

Re-designed interior brings comfort to the next level, so you can follow every impulse to explore feeling at ease like at home.

Ducato takes care of its travellers like no other: the exclusive services coming with a Ducato based motorhome, in fact, allow to prepare accurately your trip from the beginning, with tips and routes information, to the end, sharing your best pictures with Facebook and Instagram community, and on the road supported by an efficient service network and roadside assistance.

Thanks to this exclusive excellence Fiat Professional is the choice of more than 700,000 customers travelling on a Ducato base from Morocco to the Arctic Circle. Be an authentic traveler with Ducato, Leader in Freedom.



## Technology

- 06.** Ducato Motorhome Base
- 08.** Range and style
- 10.** Ducato Camper Van Base
- 12.** Safety
- 18.** Euro 6D - Final engines

## Comfort

- 22.** Automatic gearbox
- 24.** Interiors
- 28.** First class travel

## Value

- 30.** A world of services for you
- 32.** [www.fiatcamper.com](http://www.fiatcamper.com), Facebook and Instagram
- 34.** Fiat Camper Assistance
- 36.** Maximum Care Camper

## Technical specifications

- 38.** Technical specifications



**DUCATO MOTORHOME BASE VEHICLE**

# A limitless freedom.

The best European motorhome manufacturers, in partnership with Fiat Professional, design Ducato motorhome base vehicle, creating striking base and innovative living pod solutions. Born to be a motorhome.





RANGE AND STYLE

# A range aimed at your fun.

Many fittings, one mission.



Discover the stylish versatility of Ducato, able to satisfy all your equipment needs.

Ducato is the perfect result of a long and fruitful cooperation of Engineering team and Style Centre. Thanks to this synergy Ducato was born with the best optimisation between the chassis and the living unit and offers the highest level of quality in the industry, from all perspectives: open cab roof and fitted with structural reinforcements, pivoting front seats that become part of the living room, a specific reduced-weight chassis for motorhomes, high stiffness and optimal connection to the living unit and tanks, widened rear track for more internal space inside and greater stability.

A practical power socket perfectly integrates the electrical wiring between the vehicle and outfitting. The range offers numerous total gross weights and capacities, five wheelbases and six lengths; 5 engines and many versions. Everything is designed to give you always the perfect solution for your travels, both in appearance and in functionality.

## Motorhome base chassis cab

### STYLE ELEMENTS



Style dedicated to functionality, with a dynamic personality and a slender but decisive design: the attention to every design detail of Ducato is impossible to miss.

### CAPTAIN CHAIR



Captain Chair with two armrests, also available on original Fiat Professional type-approved pivoting plates. Ample space between the seats to ensure freedom of movement.

### CONVERSION READY CAB



The cab, already set up for conversion (with reinforced cab pillars, without roof or rear partition), offers factory quality for all outfittings and Fiat Professional type-approval of the seat belts.



### SUSPENSIONS



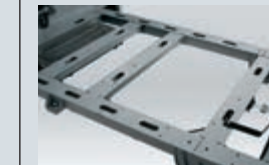
McPherson front suspension with independent wheels, standard front and rear anti-roll bar reinforced springs for motorhome versions. New higher front suspension available where necessary.

### REAR TRACK



Widened rear track for greater stability and more room across the entire living unit.

### CHASSIS SPECIAL



Chassis Special. Fiat Professional's idea of a lighter and more functional chassis for motorhomes with high torsion strength, designed to offer greater payload and less distance from the ground to the threshold of the living unit.

### CONVERSION SOCKET



Reliable CAN architecture electrical system arranged for the connection with the living unit.

### TAILOR MADE INTERFACES



Two different interfaces for original Al-Ko AMC chassis, for ultimate quality coupling when the vehicle is supplied in the Tractor cab or Tractor chassis cowl version.

### PARABOLIC LEAF SPRINGS



Depending on the type of model, different types of specific parabolic leaf springs are available, for motorhome versions for rear suspension, including a suspension in composite material.



## DUCATO MOTORHOME BASE VAN VERSION

# Top quality featured on board, strikingly get noticed over board.

Compactness, driveability and handling, enhanced interior comfort: being top-in-class is easy for the Ducato Camper Van.

Everything on Ducato as a base for Motorhome is designed to point out its excellent features, especially its modular base that can be customized in every way, providing different solutions and sizes for any need.

The ratio between the vehicle's total length and its rear area is the best of its category, ensuring maximum space and maximum quality of life while travelling. Ducato base in its van version develops in a wide range of offers: 2 wheelbases, 3 lengths, 3 heights, 6 volumes, from 10 to 17 m<sup>3</sup> and GVW from 33 to 42.5 quintals.

Its unique square and regular shaped rear compartment allows you to take advantage of every available centimeter for your living unit; while, with the adjustable steering wheel, the minimal turning circle and maximum front and side visibility, manoeuvrability is a child's play. The rear-view camera, available as an optional and embedded in the third brake light, provides a wide, detailed view on the screen of the radio, with reference lines helping determine the distance of obstacles







## SAFETY

# For any thoughtless travel you dream to do.

Ducato offers you always the most advanced control technologies, different engines types, with guaranteed safety and outstanding braking systems. You can enjoy excellent visibility and full driving pleasure for any destination you aim to reach.

Thanks to a completely electrically renewed system, your vehicle can come with a range of brand new ADAS, giving you safety and support while driving, such as the Intelligent speed assist, and parking, like the 360° active park assist.



# DRIVE TO THE FUTURE

Ducato motorhome base vehicle offers you, the best of its category in terms of safety and simply keeping your hands on steering wheel and eyes on the road brings you a step in the future. Thanks to Level 2 autonomous driving, your vehicle elevates from a single driver assistance system (ADAS) to multiple ones: combining 3 important new ADAS, the adaptive cruise control, the lane centering and the traffic jam assist, it takes over steering, acceleration, and braking events in set scenarios. Choosing a Ducato motorhome base vehicle allows you to enjoy the road and admire landscapes around, while driving in complete safety and relax.



**ADAPTIVE CRUISE CONTROL**  
Activated by handy and intuitive commands on steering wheel, Adaptive Cruise Control set and automatically adjusts the vehicle speed to maintain a safe distance from vehicles ahead. Works with forward looking camera on windscreen and proximity radar located on front bumper, providing functionality between 30 km/h and vehicle top speed, ensuring best reliability even with bad weather conditions. When coupled with the L2 Autonomous Driving system, the Adaptive Cruise Control is enhanced with Stop&Go functionality, leading the vehicle to a complete stop when the vehicle in front stops and to re-start when traffic gets moving again.



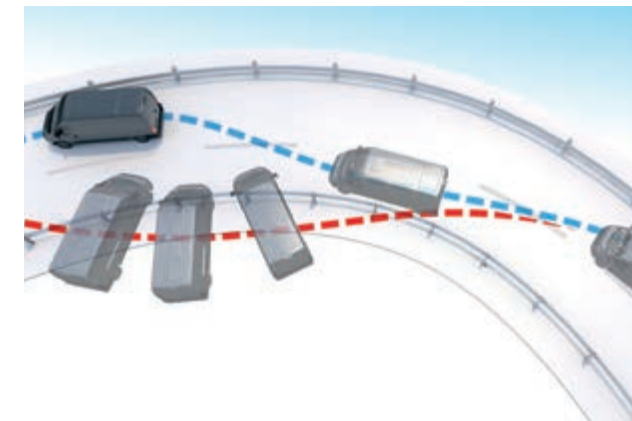
**LANE CENTERING**  
Lane Centering system prevents unintentional departure from the lane, by the help of forward looking camera on windscreen. When the system is active and operational, and if the driver has not given a turn signal, it performs corrective steering interventions to prevent the vehicle crossing painted boundary lines or even road side edges. Provides a tactile warning in the form of torque applied to the steering wheel, together with a visual and audible warnings on the instrument panel display, to signal to the driver that he must stay within the lane limits. The driver can override the warning tactile at any time by turning the steering wheel system activation / deactivation managed by physical switch on new central command stalk on dashboard. Lane Centering upgrades and replaces former Lane Departure Warning system. When coupled with the L2 Autonomous Driving system, the lane control system becomes lane centering. The New Ducato detects lane markers and road edges and, if needed, autonomously steers to keep itself in the center of the lane.



**TRAFFIC JAM ASSIST**  
This feature combines adaptive Cruise Control and Lane Centering functionalities, when being in a traffic jam. Vehicle is now able to autonomously behave:  
- On one side it can lock the vehicle ahead and set it as a target to execute lane centering in heavy traffic, on all roads  
- On the other side it can monitor vehicles driving in parallel, adapting its lateral trajectory and avoiding potential impacts  
- Stop&Go in case of traffic jam, the Traffic Jam Assist automatically brings the vehicle to a complete stop, returning to the set speed when traffic gets moving again.



**DIGITAL CENTRAL REARVIEW MIRROR**  
Central rearview mirror becomes a digital 8.9" LCD high-resolution display. When driving, it provides an unobstructed and clear view of the road behind, thanks to a wide-angle, high-definition camera located inside the rear third stop lamp bracket. Auto-dimming, activation and brightness control by buttons located on mirror.



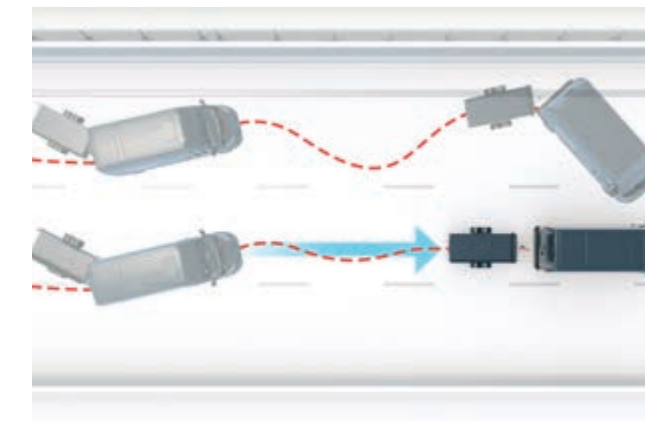
**ESC (standard)**  
ESC is the most advanced electronic system for vehicle stability and is the heart of onboard active safety. It constantly monitors vehicle travel (direction and wheel movement) and, if necessary, applies brakes to the single wheels or decreases engine power to reduce speed.  
On new Ducato, the system has been upgraded, adding 3 new features:  
- CROSS WIND ASSIST.  
- TRAILER STABILITY CONTROL SYSTEM.  
- POST COLLISION BRAKING SYSTEM.



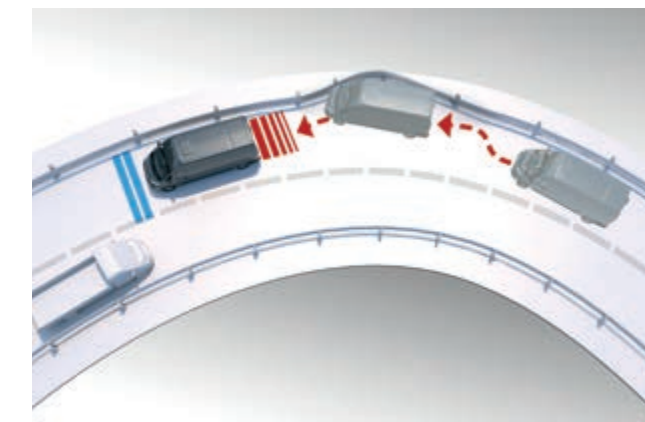
**ROLLOVER MITIGATION**  
Another function of the ESC system, designed for situations in which there is a high risk of rolling, reducing such a risk and improving the stability of the vehicle on the road surface, also around corners (function included in the ESC as standard).



**CROSS WIND ASSIST**  
Through the use of brakes, intervenes to help stabilize the vehicle through strong crosswinds, helping to keep the vehicle from drifting out of its lane (function included in the ESC as standard).



**TRAILER STABILITY CONTROL**  
Detects when a trailer is starting to oscillate and corrects any dangerous trailer swing, through a combination of either torque reduction and/or individual wheel braking (function included in the ESC as standard).



**POST COLLISION BRAKING**  
Intervenes in the event of an accident, automatically applying brakes to prevent secondary potential collisions (function included in the ESC as standard).



# ADVANCED DRIVER ASSISTANCE SYSTEMS



## TRACTION+

Traction+ is the "intelligent electronic differential" that helps the Ducato motorhome tackle mud, sand, snow and wet grass. The system transfers torque from the slipping wheel to the one with the most grip in order to regain traction.



## TRAFFIC SIGNS RECOGNITION (TSR)

By using the Lane Control camera, the system recognises speed limit and no overtaking signs and shows them on the instrument display.



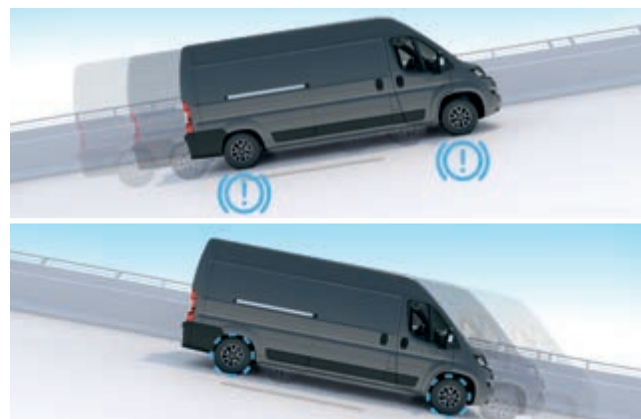
## AUTONOMOUS EMERGENCY BRAKE CONTROL

The well-known Full Brake Control, thanks to a new generation of forward looking camera located on top of windscreen, increases its functionalities and detects now pedestrians and bikers, in addition to vehicles. Working mode remains the same: vehicle either alerts the driver and triggers an autonomous emergency.



## 360° ACTIVE PARK ASSIST

For safe and quick parking maneuvers. Driver is alerted by acoustic and visual warning on cluster by the presence of sensors. Sensors are located on front, rear bumpers and side moldings. Visual warning on cluster shows the vehicle distance from obstacles, while acoustic warning increase in beep frequency as the obstacle comes nearer, becoming continuous when distance is lower than 30 centimeters. Driver can also enable a semi automatic parking maneuver on parallel and perpendicular parking slots. Pressing a dedicated button vehicle starts scanning for free parking; as soon as a space wide enough is identified a message on cluster appears; driver will only have to accelerate and brake by pedals, while vehicle will automatically perform steering maneuvers to introduce vehicle in parked position, indicating the driver when to move vehicle forward or backward.



## HILL HOLDER

Holds the vehicle during hill starts, preventing it from moving backwards without use of the handbrake. The brake is automatically released (function included in the ESC as standard).

## HILL DESCENT CONTROL

On downhill slopes, Hill Descent Control integrated in Traction+ helps maintain the desired speed with no need for constant braking. So you can focus on steering, without distractions. The function can be activated via a specific button on the dashboard.



## HIGH BEAM RECOGNITION

With Lane Control, this function allows for the automatic activation and deactivation of the dipped headlights, increasing visibility and reducing the risk of swerving during night driving, as it automatically detects vehicles travelling in the opposite lane.



## BLIND SPOT ASSIST

The BSA uses radar sensors to detect upcoming vehicles that are not visible when in the blindspot angle of the rear-view, mirrors and, in case of risk, alerts the driver with a warning light on the mirror itself and a warning sound.



## ATTENTION ASSIST

It monitors driving patterns and detects fatigued driving. If the system detects inattentive driving patterns, an audible sound and message on the display panel will bring this to the driver's attention.



## RAIN AND DUSK SENSOR

The rain sensor activates the windscreen wipers and adjusts their speed according to the intensity of the rain. The dusk sensor automatically activates the dipped beam headlights when there is insufficient outside light.



## INTELLIGENT SPEED ASSIST

Vehicle detects speed warning signs on the road thanks to traffic sign recognition and gives information to the system, offering the driver to set the vehicle speed limiter accordingly. It helps to avoid speed violations at any time.



## REAR CROSS PATH DETECTION

The RCD uses radar sensors to detect upcoming vehicles from the side, when reversing. It helps avoiding accidents when maneuvering, in particular on vehicles with a limited view angle, as camping-cars.



## TYRE PRESSURE MONITORING SYSTEM (TPMS)

This system continuously monitors tyre pressure and indicates any decreases on the instrument display.



## ENGINES

## A new efficiency.

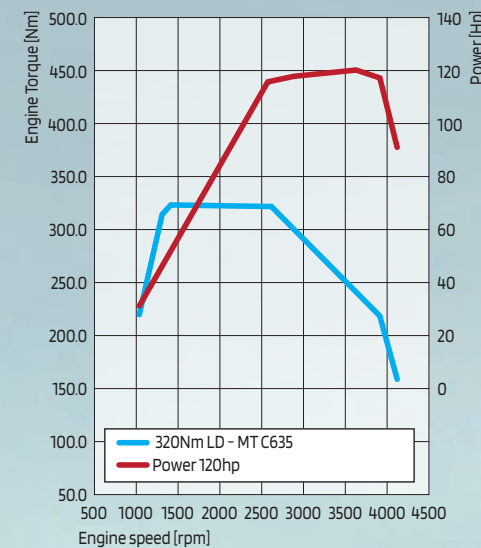
Always the right performance for each journey.



Ducato burst into the market with a effective new diesel engine technology reaching the third generation. The complete line up of Euro 6D-Final MultiJet<sub>3</sub> engines represent the adapted solutions to the different paths you undertake. The MultiJet<sub>3</sub> 120 hp is the perfect fuel-efficient solution dedicated to urban environment. The MultiJet<sub>3</sub> 140 hp is the "core" power unit, progressive in all conditions with high torque availability; the right compromise between power and consumption.

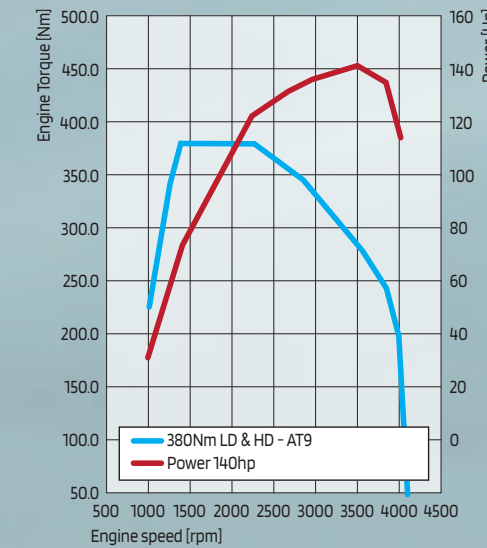
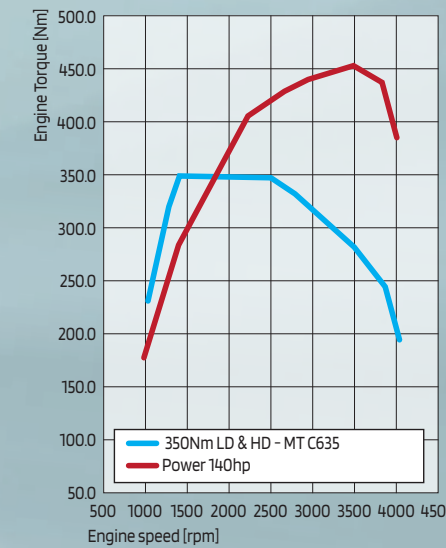
## 120 HP

**Displacement (cm<sup>3</sup>):** 2.184  
**N° of cylinders, layout:** 4, in line  
 -industrial type design  
**Fuel system:** electronically controlled Common Rail MultiJet<sub>3</sub> direct injection with variable geometry turbocharger and intercooler  
**Power:** 120 hp (89kW) at 3500 rpm  
**Torque - coupled with manual transmission:** 320 nm at 1400 rpm  
**Torque - coupled with automatic transmission:** /  
**Light duty homologation, emission level:** Euro 6D-Final - combined cycle (l/100 km) N/A - CO<sub>2</sub> emissions (g/km) N/A



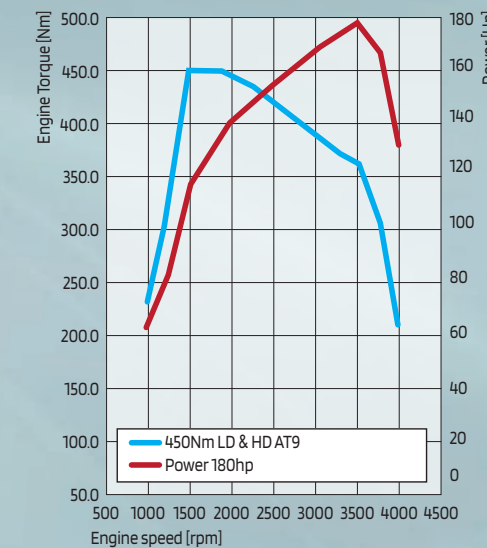
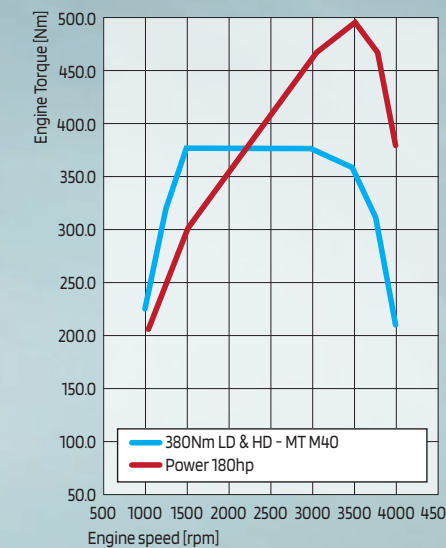
## 140 HP\*

**Displacement (cm<sup>3</sup>):** 2.184  
**N° of cylinders, layout:** 4, in line  
 -industrial type design  
**Fuel system:** electronically controlled Common Rail MultiJet<sub>3</sub> direct injection with variable geometry turbocharger and intercooler  
**Power:** 140 hp (104kW) at 3500 rpm  
**Torque - coupled with manual transmission:** 350 nm at 1400 rpm  
**Torque - coupled with automatic transmission:** 350 nm at 1400 rpm  
**Light duty homologation, emission level:** Euro 6D-Final - combined cycle (l/100 km) N/A - CO<sub>2</sub> emissions (g/km) N/A



## 180 HP\*

**Displacement (cm<sup>3</sup>):** 2.184  
**N° of cylinders, layout:** 4, in line  
 -industrial type design  
**Fuel system:** electronically controlled Common Rail MultiJet<sub>3</sub> direct injection with variable geometry turbocharger and intercooler  
**Power:** 180 hp (130kW) at 3500 rpm  
**Torque - coupled with manual transmission:** 380 nm at 1400 rpm  
**Torque - coupled with automatic transmission:** 450 nm at 1400 rpm  
**Light duty homologation, emission level:** Euro 6D-Final - combined cycle (l/100 km) N/A - CO<sub>2</sub> emissions (g/km) N/A



The MultiJet<sub>3</sub> 180 hp "Power" is the excellence for severe adventures, heavy conversions and for who's aiming the top level performances and comfort. The new generation of powertrains MultiJet<sub>3</sub> are developed to ensure you: Top Efficiency levels with reduced fuel consumptions, emissions and weight; Durability and peerless Comfort made possible by higher torque elasticity and reduced noise. Ducato evolves its tradition again, with no compromises on power and performances. Your travel will always be a step ahead.

**MANUAL TRANSMISSION.** Engine coupling: Dry single plate clutch with hydraulic release device. N° of gears: 6+R  
**AUTOMATIC TRANSMISSION.** Engine coupling: Torque converter, with electronic electro-hydraulic control system. N° of gears: 9+R  
 \*Available also in Heavy Duty



# Comfort is the new freedom.

Continue your journey also on board and discover a path of comfort details.

Everything on Ducato motorhome base vehicle is planned to let you feel comfortable and carefree. From the 9 speed automatic transmission, to the renovated dashboard, passing through the driving and operating mode or the armchair-like seats, every detail inspires relaxation and gives you the best mood to start your journey with no thoughts but fun and joy.





**9-SPEED AUTOMATIC GEARBOX**

# Hit your target destination.

Get the best of your holiday with the 9 speed automatic transmission.

Your travel spirit may lead you on different roads, various traffic conditions and several situations, but thanks to the 9-speed automatic transmission you can forget thinking about constantly shifting gears.

The AT9 is designed for your best driving pleasure. A modern torque converter has taken over the conventional clutch, allowing to shift comfortably and efficiently. This assures the perfect gear is always engaged without effort and above all with the best fuel consumption optimization.

Moreover the AT9 allows the driver to select the best driving mode according to his mission: starting from Normal for the perfect balance between performance and economy, through ECO for a fuel economy goal, to Power for more striving missions with uphill or full loads. Changing gear will not affect only your driving but your whole trip, more and more thoughtless with Ducato.



Up to 16% more torque to get you where you need to go.

**OPERATING MODE****1 AUTOMATIC**

The control module selects gears according to various driving conditions: speed, load, slope.

**2 AUTOSTICK**

Activated by moving the lever to the left, then forwards and backward to shift gears, the driver can maintain a lower gear in severe conditions to increase performance.

**AUTO MODE FUNCTIONS****KICK DOWN**

During full acceleration, e.g. for overtaking, the system holds a low gear to the benefit of pick up.

**DRIVE MODE SELECTOR**

With the selection key comfortably positioned close to gearshift, you can get the best out of every trip by choosing between three different driving modes:

**NORMAL**

The right choice for driving in normal conditions.

**POWER**

Perfect for full loads and steep slopes.

**ECO**

Take advantage of better fuel efficiency while cruising in relax mode.







BRAND NEW DASHBOARD

# Comfort becomes appealing too.

The renovated dashboard is your stylish control centre: your adventure starts here.

The fully re-designed dashboard, available in two trim levels, black and techno, features new tech contents. An innovative white backlighting provides a brand new cabin atmosphere thanks extended to every single command: from A/C to side windows, from steering wheel commands to emergency button. Moreover, you can find new floor LED courtesy lights in driver and passenger footwell. New cluster is offered in two versions, 3,5" TFT+ analogic and 7" full digital TFT to keep all under control. Not to mention an embedded navigation with possibility of setting the external dimensions of the vehicle.



The new cluster is offered in two versions, 3,5" TFT+ analogic and 7" full digital TFT.

Never again with low battery! With the new wireless phone charger located in a safe place of your dashboard your mobile will always be battery full.



New infotainment coming in 3 different radio versions, wireless integrated with Apple Car Play and Android Auto™: - 10" Radio NAV Touchscreen HD Color Display - 7" Radio Touchscreen HD Color Display - 5" Radio Color Display. Not to forget a new wide central display, offering a full climate control system showing air temperature, distribution and ventilation speed. To have a pleasant traveling in all conditions.



Apple CarPlay is a safer, smarter way to use your iPhone in your car. It lets you get directions, make calls, send and receive messages, and listen to music, all in a way that lets you stay focused on the road.



Designed for the safest driving experience whilst staying connected, Android Auto™ delivers integrated steering wheel and voice commands.



## INTERIORS

# Design your exploring attitude.

Great solutions to make your travel's thrills unique and comfortable.

The seats are designed to combine the safety of a car seat with the comfort and elegance of an armchair.

High-quality seats for the driver and passenger with 180° pivoting function, passenger compartment ventilation and acoustic and thermal insulation of the cab make every trip a real pleasure.

The dashboard houses a large number of storage compartments of various sizes, like a practical mobile phone/tablet holder and a useful open bottle holder for two 0.75 liter bottles, as an alternative to the closed central compartment.

The upper compartment keeps a 1.5 litre bottle cool when the air conditioning is activated. Small chrome-plated details give a touch of elegance to the air knobs, gear lever knob, leather steering wheel and control buttons on the radio and air conditioning. The handbrake situated on the driver's left, the large space between the seats and the perfect lighting make accessing the living unit easier.

Last but not least the re-thought door panels are more robust and bigger to accommodate all the objects that can be useful during a trip.



New steering wheel revolutionary for motorhomes maneuverability with specific setup for intuitive commands, including Cruise Control with speed limiter function.



The 230v power socket helps to easily charge electric devices such as laptops, electric tool batteries, tablets, smartphones and other low power appliances that require electricity up to 150 Watts.



Keyless Entry and Go system allows you to lock and unlock the cargo and cabin doors and turn the engine on and off, simply having your Ducato key fob near to you.



## FEATURES

# Spending your time in top class.

Ducato Fiat Professional lets you travel always at your best.

Thanks to the excellence of Ducato Fiat Professional you can experience the comfort of your home, moving to the most scenic locations you love. It gives you the freedom and the independence you need to reach new destinations surrounded by comfort, striking details, premium-quality and efficiency. The driving position is 'automotive' style through and through: excellent visibility, "Captain Chair" seats with integrated headrests designed according to motorhome specifications, a steering wheel with a more comfortable adjustable back angle, as well as the electric power steering that ensures minimum effort at low speeds. Ducato is the most agile vehicle in its category, courtesy of its smooth steering and compact cab, in which every centimeter is optimized, from the back seats to the front.

A back-up camera, where fitted, facilitates maneuvering in reverse. Maximum on-board comfort: the high torque of the engines, delivered at low rpm, ensures a really quiet drive. The torsional strength of the structure and front and rear anti-roll bars give the vehicle superior stability. The braking systems reduce the noise level and effort at the pedal. The many active and passive safety systems allow you to travel with complete peace of mind and confidence.



The new electric park brake provides greater comfort in everyday usage. Driver can activate holding mechanism by a dedicated switch located on dashboard; functionality can even be automatically enabled through a specific instrument cluster setting.



**TURNING CIRCLE**  
Ducato has an excellent turning circle (kerb-to-kerb) to facilitate all manoeuvres.



**ERGONOMICS**  
Maximum comfort thanks to adjustable seats and driving wheel, with a car-like driver's seat position.



**COMPACTNESS**  
The compactness of the front and cab makes for an extremely reduced front overhang, which makes the vehicle more easy to manoeuvre. In addition, it guarantees the "best in class" ranking between the overall length of the motorhome and that of the living unit.



**VISIBILITY**  
Maximum front and side visibility thanks to a large glazed surface.



SERVICES

# More than a holiday.

Be part of our world and taste all our best services.



Feel safe protected and pampered before, during and after the trip.

Since many years, Fiat Professional has dedicated continuous attention to make customers satisfied thanks to fully comprehensive services.

Starting from last year Fiat Professional offers a virtual show room in which you can see in depth all the product details.

A dedicated website like no other motorhome base manufacturer has, available in nine languages; it is packed with useful technical information on the Ducato based motorhome and on the Fiat Professional exclusive services like for example catalogues and product information, chassis check, newsletter with the latest news from the world of Ducato Camper and routes suggestions.

A freephone number is available for you with info, roadside assistance and customer care to provide quick assistance when necessary.

An extensive network of 6.500 Fiat Professional motorhome workshops is ready to maintain and repair your motorhomes across the whole of Europe

An extended warranty, in partnership with Mopar®, and dedicated Facebook and Instagram pages complete this full array of caring benefits for your mindless travels.



WWW.FIATCAMPER.COM, FACEBOOK AND INSTAGRAM

# Travel is authentic only when shared.

Have fun in a community of people living your same adventures.

Travelling is a way of life. Share the unique sensation of a trip with like-minded people to boost and relive the same feelings. Our constantly growing Facebook community let the travelers connect their experiences, helping each others with tips for driving devices, routes, stories and motorhome living information. Our attractive official Instagram page inspires travel lovers sharing pictures, memories and Fiat Professional news.



## WEBSITE: "www.fiatcamper.com"

Come and visit our website in nine languages that for over 10 years has been dedicated entirely to customers who chose to travel in a Fiat Professional based motorhome.

Here you can find useful technical information on the Ducato base motorhome and on the exclusive Fiat Professional services dedicated to it:

- Product catalogues and information
- On-line consultation of the Owner Handbook
- Service information
- Chassis check: enter the VIN of your vehicle to check for current recall or update campaigns
- Find a workshop in Europe
- Newsletter Subscription with the latest news from the world of Fiat Professional Camper
- Tourist news and tips for servicing and making the most of your motorhome
- Link to manufacturers' websites
- FAQ

## "Fiat Ducato Camper" FACEBOOK FANPAGE

We are very proud of our community. Join us and share your most beautiful pictures and your experiences. There are so many of us and new people joining us every day!

## @FIATPRO4RV Instagram Page

The official Instagram page @fiatprofessional4rv was born in order to connect the community of Ducato motorhome lovers around the world and share pictures and memories, using #fiatducatocamper. Get inspired for your next trip and remain up to date on Fiat Professional for Recreational Vehicles!



**WWW.FIATCAMPER.COM**  
Discover the world of exclusive Fiat Professional Camper services



**FIAT DUCATO CAMPER**



**@FIATPRO4RV**



FIAT CAMPER ASSISTANCE

# Just relax. We'll be there for you.

Nothing to think but the destination.



The multilingual call center travels with you 24/7\*. Fiat Camper Assistance, the road rescue team, in 51 countries and speaking 15 languages will come to your aid in the case of unforeseen events\*\* (breakdown, fault, accident punctures, flat battery). Thanks to a single phone number you won't be alone.

More than 6500 Fiat Professional workshops throughout Europe are always available to Fiat Professional base motorhomes. Of these, 1800 Fiat Camper Assistance workshops have additional requirements, facilities and tailored sizes to assist Fiat Professional base motorhomes in the most complete manner possible.

These offer motorhome access, space inside the workshop and suitable auto lifts, a greater supply of materials and spare parts and also benefit from dedicated processes to reduce intervention times.

\* Roadside assistance is free for the first 2 years from the date of first registration.  
\*\* Details on [www.fiatcamper.com](http://www.fiatcamper.com) or in the Warranty Booklet



**CAMPER ASSISTANCE**  
00800 3428 1111  
15 languages - 51 countries  
24 hours a day, 7 days a week  
everywhere in Europe



**SERVICE NETWORK**  
1800 Fiat Camper Assistance  
Workshops 6500  
Fiat Professional Authorised  
Workshops in Europe



**MOBILE WORKSHOP**



**HOTEL COSTS**



**COURTESY CAR**



**TOWING**



**TRAVELEXPENSES**



**RECOVERY OF REPAIRED MOTORHOME**



**RECOVERY OF UNREPAIRED MOTORHOME**



**RETURN HOME OR ONWARD JOURNEY**



**CASH ADVANCE**



MAXIMUM CARE CAMPER

# Tailor made solutions.



In collaboration with Mopar®, Fiat Professional offers some interesting options to extend warranty beyond the contractual period, ensuring even greater peace of mind.

Because the contractual warranty lasts 2 years from the initial registration date, but the life of a motorhome is much longer!

Just for you, Fiat Professional and Mopar® have therefore developed:

- 3 different possible plans
- very favourable in terms and value for money

The plans may be purchased from a Fiat Professional Dealership within 12 months from the first registration\*.

The product is also valid after the contractual warranty deadline and is created to cover material or manufacturing faults which appear within the terms for up to a maximum 5 years\*\*. For example, with the Maximum Care option, you can protect your Fiat Professional base motorhome from all types of electronic and mechanical breakdown for five years. Choose the offer, and duration, that best suits your needs, to ensure complete longterm peace of mind while travelling. Remember that the key to a successful motorhome holiday, whether in summer or in winter, is to check that everything is in perfect condition and good to go. Every year, Fiat Camper Workshops offer interesting options in terms of seasonal check-ups: stay informed via the dedicated site.

\* UK: within 15 days from the first registration  
 \*\* Two years of contractual warranty + extended warranty for from one to three years at a charge.  
 For more information, restrictions and exclusions, go to [www.fiatcamper.com](http://www.fiatcamper.com).



**CAMPER ASSISTANCE 00800 3428 1111 \*\*\***  
 15 languages - 51 countries - 24 hours a day, 7 days a week everywhere in Europe



**MAXIMUM CARE CAMPER**  
 Warranty extension\*  
 up to 5 years with dedicated "Fiat Camper Assistance" throughout Europe included



**VEHICLE PROTECTION**

\*\*\* Details on [www.fiatcamper.com](http://www.fiatcamper.com) or in the Warranty Booklet.

**BEST CAMPER BASE**

A title awarded by readers of German specialist publication "Promobil" for the fourteenth time in a row.

Ducato Fiat Professional is recognised as the best motorhome base by the major specialised publications in Europe above all for its technological qualities and the offered service excellence.

With Ducato Fiat Professional your family can enjoy peaceful, carefree and safe holidays.



Technical  
features.





## TECHNICAL SPECIFICATIONS DUCATO

ENGINE	120 MULTIJET <sub>3</sub>	140 MULTIJET <sub>3</sub>	
No. of cylinders, layout	4, in line	4, in line	
Displacement in cc (bore x stroke in mm)	2184 (83,8 x 99)	2184 (83,8 x 99)	
Compression ratio	15,7:1	15,7:1	
Max power output (EEC): kW (HP) / rpm	89 (120) / 3500	104 (140) / 3500	
Max torque output (EEC): Nm / rpm (with AT9)	320 / 1400-2500	350 / 1400-2500 (380 / 1400-2250)	
Emission standard level	Euro 6d-final	Euro 6d-final / Euro VI-E	
Timing system (control)	DOHC (toothed belt)	DOHC (toothed belt)	
Supply	electronically controlled Common Rail MultiJets direct injection with variable geometry turbocharger and intercooler	electronically controlled Common Rail MultiJets direct injection with variable geometry turbocharger and intercooler	
Ignition	by compression	by compression	
TRANSMISSION			
Drive	front	front	
Clutch	dry single plate with hydraulic release device	dry single plate with hydraulic release device	torque converter
Gearbox, no. of gears	manual, 6 + R	manual, 6 + R	automatic, 9 + R with manual upshift / downshift functionality 3 drive modes available (normal / eco / power)
STEERING			
Type	electric rack and pinion power steering, with steering effort and energy consumption adaptation to vehicle speed		
Turning circle (kerb-to-kerb)	short wheelbase 11,1 m – medium wheelbase 12,5 m – medium-long wheelbase 13,6 m – long wheelbase 14,3 m – long wheelbase with extra overhang 15,3 m		
BRAKING SYSTEM - D (DISC)			
Type	dual H-I circuit; front and rear disc brakes, ABS with electronic brake force distribution		
Front: Ø mm	33q-35q: 280x28 self-ventilating	33q-35q: 280x28 self-ventilating MAXI 35q-42,5q: 300x32 self-ventilating	33q-35q-MAXI 35q-42,5q: 300x32 self-ventilating
Rear: Ø mm	33q-35q: 280x16	33q-35q-MAXI 35q: 280x16 MAXI 42,5q: 300x22	33q-35q: 280x16 MAXI 35q-42,5q: 300x22
Brake servo: Ø	33q-35q: 11"	33q-35q-MAXI 35q: 11" MAXI 42,5q: 10" + 10" tandem	33q-35q: 11" MAXI 42,5q: 10" + 10" tandem
SUSPENSIONS			
Front standard configuration	independent, McPherson type with wishbones, coil springs, telescopic shock absorbers and anti-roll bar		
Rear standard configuration	rigid tubular axle with parabolic longitudinal leaf springs, telescopic shock absorbers and flexible side buffers		
Maximum permitted weight on front axle (kg)	33 q: 1800kg – 35q: 1880kg	33 q: 1800kg – 35q: 1880kg MAXI 35q-42,5q: 2100 kg	33 q: 1840kg – 35q: 1960kg
Maximum permitted weight on rear axle (kg)	33q: 1900kg – 35q: 2000kg	33q: 1900kg – 35q: 2000kg MAXI 35q-42,5q: 2400 kg	
WHEELS			
Tyres manual:	33q-35q 215/70 R 15 C (215/75 R 16 C optional, 225/70 R 15 C all season optional) – MAXI 35q 215/75 R 16 C – MAXI 42,5q 225/75 R 16 C (225/75 R 16 C all season optional)		
Tyres automatic:	33q-35q-MAXI 35q 215/75 R 16 C MAXI 42,5q 225/75 R 16 C (225/75 R 16 C all season optional)		

		EXTERIOR DIMENSIONS (mm)				INTERIOR DIMENSIONS (mm)				VOLUME m <sup>3</sup>
		Wheelbase	Length	Height	Width	Length	Height	Width	Between wheel arches	
VAN	MH1	3450	5413	2254	2050	3120	1662	1870	1422	10
	MH2	3450	5413	2524	2050	3120	1932	1870	1422	11,5
	LH2	4035	5998	2524	2050	3705	1932	1870	1422	13
	LH3	4035	5998	2764	2050	3705	2172	1870	1422	15
	XLH2	4035	6363	2524	2050	4070	1932	1870	1422	15
	XLH3	4035	6363	2764	2050	4070	2172	1870	1422	17

180 MULTIJET <sub>3</sub> POWER	
4, in line	
2184 (83,8 x 99)	
15,7:1	
130 (180) / 3500	
380 / 1500-3000 (450 / 1500-1750)	
Euro 6d-final / Euro VI-E	
DOHC (toothed belt)	
electronically controlled Common Rail MultiJets direct injection with variable geometry turbocharger and intercooler	
by compression	
TRANSMISSION	
front	
dry single plate with hydraulic release device	torque converter
manual 6 + R	automatic, 9 + R with manual upshift / downshift functionality 3 drive modes available (normal / eco / power)
STEERING	
electric rack and pinion power steering, with steering effort and energy consumption adaptation to vehicle speed	
short wheelbase 11,1 m – medium wheelbase 12,5 m – medium-long wheelbase 13,6 m – long wheelbase 14,3 m – long wheelbase with extra overhang 15,3 m	
BRAKING SYSTEM - D (DISC)	
dual H-I circuit; front and rear disc brakes, ABS with electronic brake force distribution	
33q-35q: 280x28 self-ventilating MAXI 35q-42,5q: 300x32 self-ventilating	33q-35q-MAXI 35q-40q: 300x32 self-ventilating
33q-35q-MAXI 35q: 280x16 MAXI 42,5q: 300x22	33q-35q: 280x16 MAXI 35q-42,5q: 300x22
33q-35q-MAXI 35q: 11" MAXI 42,5q: 10" + 10" tandem	33q-35q: 11" MAXI 42,5q: 10" + 10" tandem
SUSPENSIONS	
independent, McPherson type with wishbones, coil springs, telescopic shock absorbers and anti-roll bar	
rigid tubular axle with parabolic longitudinal leaf springs, telescopic shock absorbers and flexible side buffers	
33 q: 1800kg – 35q: 1880kg MAXI 35q-42,5q: 2100 kg	33 q: 1840kg – 35q: 1960kg
33q: 1900kg – 35q: 2000kg MAXI 35q-42,5q: 2400 kg	
WHEELS	
33q-35q 215/70 R 15 C (215/75 R 16 C optional, 225/70 R 15 C all season optional) – MAXI 35q 215/75 R 16 C – MAXI 42,5q 225/75 R 16 C (225/75 R 16 C all season optional)	
33q-35q-MAXI 35q 215/75 R 16 C MAXI 42,5q 225/75 R 16 C (225/75 R 16 C all season optional)	

EXTERIOR DIMENSIONS (mm)					
		Wheelbase	Length	Height	Width
Chassis Cab Special	MH1	3450	5258	2254	2050
Chassis Cowl	MLH1	3800	5608	2254	2050
Chassis Cowl Special	LH1	4035	5843	2254	2050
	XLH1	4035	6208	2254	2050
	XXLH1	4300	6108	2254	2050





**Happiness is the journey  
not the destination.**





#### **CAMPER ASSISTANCE**

00800 3428 1111

15 languages - 51 countries  
24 hours a day, 7 days a week  
everywhere in Europe.



#### **DEDICATED WEBSITE**

[www.fiatcamper.com](http://www.fiatcamper.com)

Discover the world of exclusive  
Fiat Professional services.



#### **SERVICE NETWORK**

1800 Fiat Camper Assistance  
Workshops 6500  
Fiat Professional  
Authorised Workshops.



#### **5 MAXIMUM CARE CAMPER**

Warranty extension\*  
up to 5 years with dedicated  
"Fiat Professional Assistance"  
throughout Europe included.

\*two years of contractual warranty + extended  
warranty for from one to three years at a charge.

With five Euro 6d-Final MultiJet<sub>3</sub> engines delivering 140 and 180 HP in fully automatic 9-speed transmission or manual transmission and 120 HP with 6-speed manual transmission - Ducato gives you the chance to choose the engine and gearbox that best suits your needs. In all its details it is designed from the start to be a motorhome base. Ducato is chosen by the most appreciated European Recreational Vehicles manufacturers and has been giving you the freedom to go wherever you want for 40 years, for even better driving and even more enjoyment. With Ducato and the range of exclusive Fiat Professional services motorhome travellers can stay worry-free. Ducato is the Leader in Freedom.

The data contained in this publication is only indicative. This brochure shows model-specific features and contents that can be chosen by motorhome manufacturers, including all the possible features and equipments foreseen for current generation. Please refer to your motorhome builder to check the availability of features and equipments you are interested in.

Trim levels and the optional equipment may vary due to specific market or legal requirements. The data contained in this publication is only indicative. Fiat may change the models described in this publication at any time for technical or commercial reasons.

Fiat Marketing 04.34190.52 - S - 06/2022



[www.fiatcamper.com](http://www.fiatcamper.com)