

RAV4



Please Note: information is accurate as at October 2024.

Specification and imagery are indicative and should only be used as a guide. Vehicle and accessory specification, features, colour and trim may differ at the time of vehicle delivery.



OH WHAT A FEELING

You'll feel it with every drive. In every twist and every turn. It's our unwavering commitment to move you, not only today, but well into tomorrow as we relentlessly reimagine the future of mobility.

With our eyes on the horizon, we're committed to creating a future where all of humankind is empowered with the freedom to move.

03	Exterior design	09	Safety	15	RAV4 XSE
04	Design detail	10	Toyota Safety Sense	16	RAV4 Cruiser
05	Interior design	12	Toyota Connected Services	17	RAV4 Edge
06	Performance			18	Colours and Trim
07	Hybrid technology	13	RAV4 GX	20	Accessories
08	Technology	14	RAV4 GXL	24	Unlock It All

Setting the benchmark, again.



The first RAV4 defined the compact SUV and pioneered a new attitude in everyday possibilities. In the spirit of the original, RAV4 is again making a bold statement in modern performance, capability and design.

RAV4 has been engineered from the ground up and epitomises intuitive modern thinking. From the purposefully chiselled exterior lines, through to the innovative technology, including Toyota's Hybrid Electric powertrain, every RAV4 effortlessly blends admirable fuel efficiency¹ with formidable performance.

Today, more than ever, RAV4 promises a world of adventure combined with exceptional on-road characteristics and versatility, to be everything a compact SUV should be.

Forward thinking



Every detail in RAV4 has been thoughtfully designed to present a confident and refined presence on the road.

The exterior design features a wide stance for increased stability and brilliant on-road behaviour. The dynamic lines are accentuated with premium finishes and matched with contemporary touches.

Up front, the sharp design of the long, sleek headlamps is accentuated by integrated clearance and Daytime Running Lamps.

The superior handling, stability and comfort that come from the advanced aerodynamics all help minimise driver fatigue over long distances. These design features, including aero stabilising fins and a rear spoiler, also contribute to improved fuel efficiency.

Every RAV4 rides assured on sharp looking alloy wheels to provide a stylish yet genuinely surefooted connection with the road.

Within the spacious RAV4, soft touch surfaces and outstanding visibility deliver an experience unlike any other.



Elevate your senses



Within RAV4, everything has been designed to elevate your overall driving experience. Each feature has been carefully crafted to deliver maximum versatility and exceptional comfort, with luxurious tactile finishes and materials being used throughout.

RAV4 Cruiser possesses the premium feel of leather accented seats, with heated front passenger seats and driver's seat memory (2-positions). Exceptional legroom provides enough space for everyone to stretch out, and the tilt and slide moonroof on RAV4 Cruiser and Edge grades further enhances the bright

spacious atmosphere within. For those in the back seat, adjustable head rests and rear air vents circulate air to provide an enhanced standard of comfort.

In RAV4, you'll find an expansive boot space coupled with a power back door in XSE, Cruiser and Edge grades. The easily reversible boot floor available on variants with a space saver spare wheel, allows you to switch between durable plastic or soft carpet. On the road, the suspension and chassis provide an exceptionally smooth and satisfying ride, ultimately resulting in a whisper-quiet cabin inside.

- A Steering wheel with telephone, audio, voice recognition, Active Cruise Control and Lane Departure Alert controls
- B 60:40 split fold rear seat – Cruiser AWD model shown
- C Reversible boot floor – excludes variants with full size spare wheel
- D Front dual-zone climate control – Cruiser model shown
- E Gear lever and cup holders – Cruiser AWD model shown

The power to amaze



Every element of RAV4 has been engineered to attain new levels of driving excellence and exhilaration.

The 2.5L Toyota Hybrid Electric System comes in 2WD (except Edge) and AWD. It offers the best of both petrol and hybrid-electric power, delivering an impressive 163kW of combined power on AWD models and fuel consumption as low as 4.7L/100km¹ on 2WD models. The hybrid electric RAV4 automatically charges as you drive, so never needs to be plugged in, and is paired with the smooth response of an Auto CVT.

The 2.5L hybrid AWD engine combines genuine strength with fuel efficiency for an enhanced driving experience. With power transferred through either Auto CVT or an advanced 8-speed automatic transmission, it delivers the next generation in response and feel.

When it comes to pulling its weight, the 2.5L Toyota Hybrid Electric system AWD engine shoulders an impressive 1.5 tonne braked towing capacity.²

Cruiser AWD shown accessorised with tow bar, tow ball and trailer wiring harness.² All accessories sold separately.

The Hybrid System



Four Key Benefits

Toyota's latest Hybrid Electric technology gets you moving powerfully and smoothly every time. Enjoy an uncompromising drive with responsive, dynamic performance.

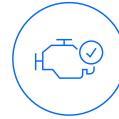
Further

There's no need to plug in a Toyota Hybrid. Electricity is created as you drive, capturing energy when you brake or slow down. This power is then stored away, ready to be used later in the hybrid battery.



Quiet

The quieter and calmer experience in a Toyota Hybrid Electric is proven to deliver one of the most satisfying and enjoyable drives on the road, with no compromise on vehicle responsiveness. It's why millions of Hybrid drivers choose never to go back to petrol-only engines once they've made the switch.



Reliable

Toyota's Hybrid Electric System offers the reliability and quality you can always expect from Toyota. It's technology that's been tested and trusted for over 25 years – so no matter where you go, you'll have peace of mind in every drive.



Powerful

Experience an uncompromising drive in a Toyota Hybrid Electric with responsive, dynamic performance. You get impressive off-the-line torque that gets you moving powerfully and smoothly every time.

Starting off

The electric motor is used primarily and power stored in the battery is used to turn the motor.

Full acceleration

When accelerating or cruising at speed, the petrol engine turns on automatically in addition to the electric motor. Ensuring you receive the power and responsive performance you need.

Braking and deceleration

The electric motor generates power when braking and slowing down, charging the battery. No fuel is used, so there are minimal CO₂ emissions.

Normal driving

A mix of petrol and electric power is used for best economy, depending on the conditions. The battery is recharged where possible.

At rest

With the car brought to a stop, the petrol engine cuts off. The system automatically avoids idling to conserve fuel and reduce CO₂ emissions.



Switched-on living

The advanced technology in RAV4 helps transform every journey into an effortless driving experience.

The 7" Multi Information Display on RAV4 GX and the GXL, rising to 12.3" on RAV4 XSE, Cruiser and Edge, delivers important trip and performance information including odometer, outside temperature and driver assist functions.

You'll find an 8" colour touchscreen display on GX and GXL, increasing to 10.5" for XSE, Cruiser and Edge. Both screen sizes include a USB³ port, digital radio and the convenience of Bluetooth^{®4} connectivity. Your experience is further enhanced with CarPlay^{®5} (now wireless) and Android Auto^{™,6,7} (speak to your Dealer about device compatibility) for compatible smart phones, allowing you to safely use voice commands, touchscreen or dials to play music, navigate via maps, or use a wide range of your favourite apps and much more.

On RAV4 Cruiser and Edge, a 9-speaker JBL^{®8} premium audio system delivers an even richer, clearer sound performance. The wireless phone charger⁹ on GXL grades and higher provides added convenience. A 12V DC accessory socket is located in the centre console of every RAV4, with two fast-charging USB³ ports in the armrest storage and further two USB³ ports for rear passengers.



A 12.3" Multi Information Display – XSE, Cruiser and Edge only. Cruiser shown. Image indicative only.

B Wireless phone charger⁹ – GXL, XSE, Cruiser and Edge only. Cruiser shown.

C Armrest storage with USB³ ports

D Rear seat air vents and USB³ ports

A higher standard of safety

Every RAV4 features Toyota Safety Sense technology to help protect all those travelling within.

Toyota Safety Sense is standard across the range and seven SRS airbags provide all round protection and peace of mind. Every RAV4 comes with reversing camera¹⁰ featuring a Back Guide Monitor and you'll have the added benefit of a Panoramic View Monitor on Cruiser and Edge. When reversing out of a blind car space, Rear Cross Traffic Alert¹⁰ can help warn you of vehicles approaching from either side and crossing behind you.

If you're driving on a multi-lane road, Blind Spot Monitor¹⁰ can help detect vehicles driving in, or rapidly approaching the blind spots and can alert the driver with an indicator in the wing mirrors.



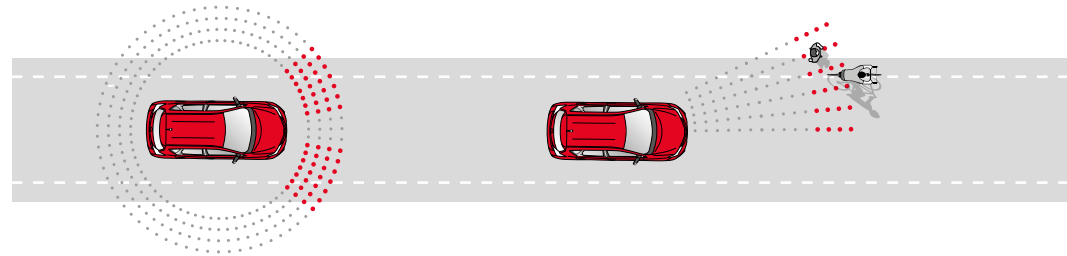
- A 7 SRS airbags – overseas Cruiser model shown
- B Blind Spot Monitor¹⁰
- C Panoramic View Monitor – Cruiser and Edge only
Cruiser model shown. Image indicative only.

Toyota Safety Sense



At Toyota, we believe it's simply not enough to say "safety comes first" – we prove it. That's why, in our ongoing pursuit of creating ever safer cars, now and into the future, we developed Toyota Safety Sense¹⁰ (TSS). A suite of active safety features designed to protect us all through helping to support safe driving.

RAV4 features TSS driver assistance technologies, aiming to recognise and help avoid certain hazards and collisions, giving you and your passengers greater peace of mind wherever you're headed. Please visit toyota.com.au for vehicle and specification information.



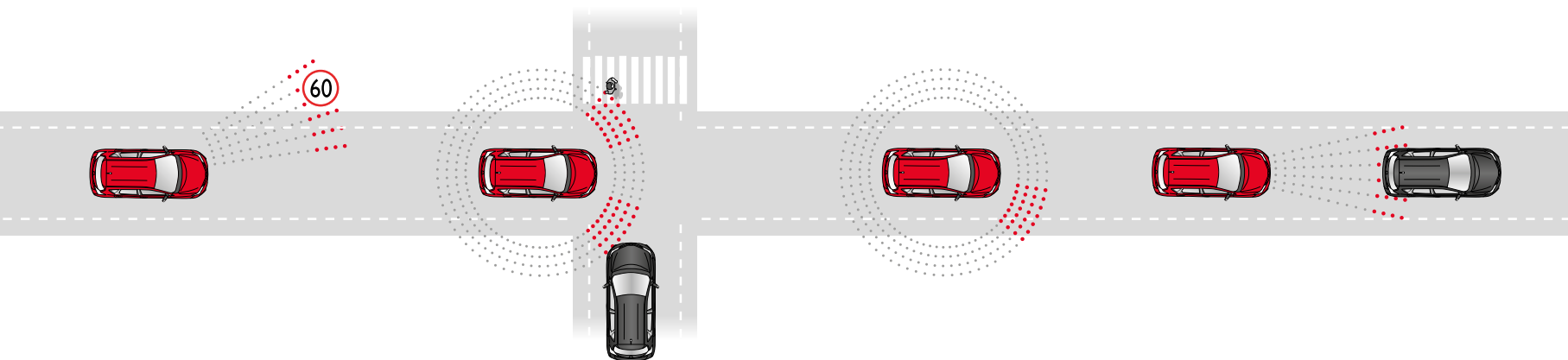
Lane Trace Assist

When driving on highways and freeways, Lane Trace Assist uses a camera to detect lane markings when cruise control is active and includes curve reduction system. It is designed to alert you and provide steering assistance to help avoid drifting, and keep you centred in your lane.¹⁰

Pre-Collision Safety (PCS) system with pedestrian and daytime cyclist detection

Pre-Collision Safety system with pedestrian and daytime cyclist detection is a multi-stage warning system. Using an integrated camera and radar to help detect other vehicles in front of you, the PCS is designed to assist the driver where there is a likelihood of frontal collision with cars and pedestrians during day or night, or cyclists during the daytime. PCS includes a visible and audible alert of possible collisions, additional braking force to assist when you're braking, and if a collision appears to be unavoidable automatic braking to help mitigate impact.¹⁰





Road Sign Assist (speed signs only)

Road Sign Assist was developed to help recognise certain road speed signs and provide information to you. It displays the most recently recognised speed limit on the Multi Information Display.¹⁰

Intersection Turn Assist

Intersection Turn Assist helps prevent accidents at intersections by detecting oncoming cars and pedestrians crossing the street when the vehicle is turning.¹⁰

Lane Departure Alert with steering assist

Lane Departure Alert with steering assist is designed to help prevent vehicles drifting from their lane by monitoring road markings, and providing a visible and audible alert should it detect any deviation from the lane. It may also apply additional steering force if needed to help you stay in your lane.¹⁰

Active Cruise Control (all speed)

Active Cruise Control is designed to help keep a constant distance between vehicles. It uses a millimetre wave radar to monitor the gap between your vehicle and the one in front, automatically accelerating or slowing down when needed to help you maintain a set distance.¹⁰

Toyota Connected Services¹¹



12 months complimentary access

Driving should be easy, enjoyable and safe. That's why inside every connected Toyota you'll find a suite of advanced features focused on safety and convenience for a better driving experience, all seamlessly integrated into the myToyota Connect app.

Learn more, and discover the Toyota Connected Services on your vehicle by visiting toyota.com.au/connected

For Toyota Connected Service Packages see toyota.com.au/connected/plans-packages

Test drive the app now, no Toyota required:



Safety and Security

People and property are precious. Toyota Connected Services' advanced features are designed to help protect them all. In emergencies, you can utilise push-button SOS Emergency Call¹² (SOS). It contacts Toyota Emergency Assistance directly, guiding services to your location. In the event of a collision, Automatic Collision Notification¹³ (ACN) is designed to activate, calling you directly in-car, and if you are unresponsive, dispatching emergency services to that location. Should your car be reported stolen, Stolen Vehicle Tracking¹⁴ (SVT) can utilise tracking vehicle technology via our Stolen Vehicle Assistance Call Centre to help locate your car and call police.



Remote Connect

Control vehicle functionality, even when you're not in the driver's seat. Our Connected features¹⁸ enable you to remotely start your engine (up to 10 mins prior), lock and unlock doors (not including rear tailgate) and activate hazards remotely. Perfect for flagging emergencies.



Driver Insights

The myToyota Connect app gives you a complete view across your entire drive. Review recent trips and, with Drive Pulse Score,¹⁵ understand how braking and cornering can be improved to help maintain your car. The features let you run quick checks on odometer, fuel levels and distance to empty¹⁶ to aid journey planning. You can also spot unlocked doors or open windows away from your car using the in-app Vehicle Status features,¹⁷ and set up alerts. A Vehicle Locator also helps you find where you last parked, and our Glove Box feature opens access to digital warranty and manuals for you.



Multimedia Connect

Toyota's interconnected Multimedia platform includes Connected Navigation which provides current parking availability, traffic, weather and fuel prices for your journey. Through "Hey Toyota" Voice Assist, control vehicle features including navigation, audio and climate settings. With Connected Trip Start and Finish features you can plan routes, search a point of interest and send it to your car. When driving and not reaching your endpoint, the app notes the full route when you park, allowing you to continue navigation on foot with your phone or device.

GX

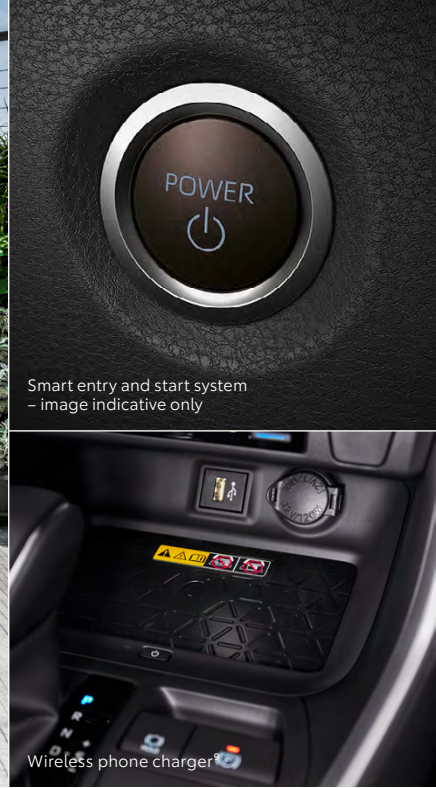


Apple CarPlay^{®5,7} – GX AWD shown, image indicative only

Dual zone climate control – GX shown

- 2.5L Toyota Hybrid Electric System (2WD or AWD)
- Continuously Variable Transmission (Auto CVT)
- 17" alloy wheels
- LED Daytime Running Lamps
- LED rear combination lamps
- Front LED fog lamps
- Power adjustable side mirrors with heaters
- Electronic Park Brake with brake hold
- Electrically retractable side mirrors
- 8" colour touchscreen display
- Wireless Apple CarPlay^{®5}
- Android Auto^{™,6,7}
- USB ports³ – x3 front, x2 rear
- 7" Multi Information Display (MID)
- Digital radio
- Steering wheel controls with audio, MID, voice recognition and telephone controls
- Blind Spot Monitor
- Rear Cross Traffic Alert
- Reversing camera with Back Guide Monitor
- Front and rear parking sensors
- Hill-start Assist Control
- Automatic headlamps – light sensitive
- Rain sensing wipers
- Connected Navigation¹¹
- Remote entry with smart start system
- Toyota Safety Sense – including Lane Departure Alert, Lane Trace Assist, Pre-Collision Safety system with pedestrian and daytime cyclist detection and Intersection Turn Assist, Emergency Steering Assist, Road Sign Assist (speed signs only), Automatic High Beam and Active Cruise Control (all speed)
- 12 months complimentary access to Toyota Connected Services¹¹ including Safety and Security features, Driving Insights and Remote Connect – accessible via myToyota Connect app
- Front dual-zone climate control
- Projector LED headlamps
- Full size spare wheel – optional

GXL



Smart entry and start system
- image indicative only

Wireless phone charger

In addition to, or in replacement of, GX features:

- 2.5L Toyota Hybrid Electric System
- 18" alloy wheels
- Rear privacy glass
- Roof rails
- Premium embossed fabric seats
- Wireless phone charger⁹
- Smart entry
- Auto-dimming rear view mirror
- Premium bumper and grille
- Front mudguards
- Illuminated interior door switches

XSE



SofTex® seats with blue stitching



12.3" Multi Information Display

In addition to, or in replacement of, GXL features:

- 2.5L Toyota Hybrid Electric System
- Driver and front passenger heated seats – 2 settings
- 10-way power adjustable driver seat with power lumbar support adjustment
- Leather accented door trim
- SofTex® seats with blue stitching
- Unique ambient lighting
- 10.5" colour touchscreen display
- 12.3" colour Multi Information Display
- Power back door
- 18" alloy wheels
- Unique black XSE design door mouldings, exterior mirrors, fog lamp detailing, front and rear bumper, grille, overfenders and two-tone roof
- Inbuilt Navigation¹⁹

Cruiser



Panoramic View Monitor¹⁰ – image indicative only



Tilt and slide moonroof

In addition to, or in replacement of, GXL features:

- 2.5L Toyota Hybrid Electric System
- 10-way power adjustable front passenger seat
- 18" gloss black alloy wheels
- Tilt and slide moonroof
- Power back door
- Leather accented interior
- 10-way power adjustable driver's seat with power lumbar support adjustment
- Driver's seat memory – 2 positions
- Driver and front passenger heated and ventilated seats – 3 settings
- Chrome trimmed exterior door handles
- 10.5" colour touchscreen display
- 12.3" colour Multi Information Display
- 9-speaker JBL^{®8} premium audio
- Panoramic View Monitor¹⁰
- Ambient interior cabin lighting
- Automatic electronically retractable door mirrors
- Digital rear view mirror
- Inbuilt Navigation¹⁹

Edge



19" alloy wheels



Unique Edge design bumper, grille and fog lamp surrounds

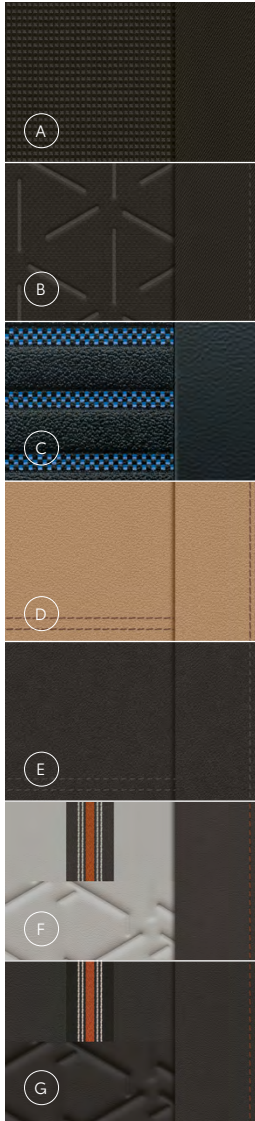
In addition to, or in replacement of, GXL features:

- 2.5L Toyota Hybrid Electric System (AWD)
- Continuously Variable Transmission (Auto CVT)
- 19" alloy wheels
- Unique Edge design bumper, wheel arch moulding, grille and fog lamp surrounds
- Power back door
- SofTex^{®8} seats
- Front passenger 4-way manual seat adjustment
- Driver and front passenger heated and ventilated seats – 3 settings
- 9-speaker JBL^{®8} premium audio
- 10.5" colour touchscreen display
- 12.3" colour Multi Information Display
- Panoramic View Monitor
- Ambient interior cabin lighting
- Inbuilt Navigation¹⁹
- Digital rear view mirror

Shades of brilliance

We have put together a range of colour options²⁰ for each RAV4 model, all specially chosen to allow you to match your RAV4 to your individual expression and taste. So how will you choose to colour your statement in driving style?

Whichever RAV4 you choose, the interior expresses exceptional comfort, style and quality. From refined fabrics through to leather accents and embossed finishes, every RAV4 trim option combines a premium feel, meticulous attention to detail and outstanding looks.



COLOUR AND TRIM GUIDE		Glacier White ²⁰	Frosted White ²⁰	Silver Sky ²⁰	Graphite ²⁰	Eclipse Black ²⁰	Atomic Rush ²⁰	Mineral Blue ²⁰	Saturn Blue ²⁰	Jungle Khaki	Frosted White with black roof ²⁰	Silver Sky with black roof ²⁰	Graphite with black roof ²⁰	Mineral Blue with black roof ²⁰
Grade	Interior Seat Trim													
GX	Black fabric sewn pattern (FB20)	•		•	•	•	•	•	•					
GXL	Black fabric embossed pattern (FA20)	•	•	•	•	•	•	•	•					
XSE	Black SofTex [®] with blue accents (EC20)										•	•	•	•
Cruiser	Nutmeg leather accented (LA40)	•	•	•	•	•	•	•	•					
	Black leather accented (LA20)	•	•	•	•	•	•	•	•					
Edge	Orchid Brown and Light Grey SofTex [®] with orange accents (EB41)				•	•	•	•		•				
	Black SofTex [®] with orange accents (EB20)				•	•	•	•		•				

- A Black fabric sewn pattern FB20
- B Black fabric embossed pattern FA20
- C Black SofTex[®] with blue accents EC20
- D Nutmeg leather accented LA40
- E Black leather accented LA20
- F Orchid Brown and Light Grey SofTex[®] with orange accents EB41
- G Black SofTex[®] with orange accents EB20



● Silver Sky 1D6 / Silver Sky with black roof²⁰ 2QY



● Frosted White 089 / Frosted White with black roof²⁰ 2PS



○ Glacier White 040



● Graphite 1G3 / Graphite with black roof²⁰ 2QZ



● Mineral Blue 8W2 / Mineral Blue with black roof²⁰ 2VV



● Atomic Rush²⁰ 3T3



● Eclipse Black²⁰ 218



● Saturn Blue²⁰ 8X8



● Jungle Khaki 6X3

Your RAV4, tailored to your lifestyle.

More than an exciting partner to get you out and enjoying life, RAV4 makes a clear statement about your lifestyle choices and purpose.

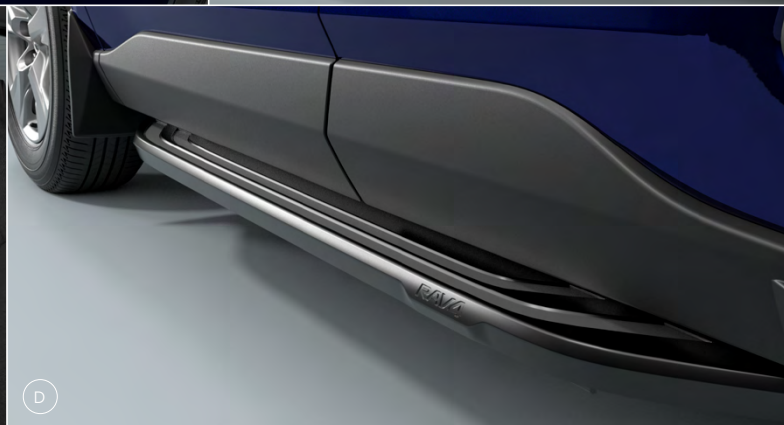
By choosing from our range of Toyota Genuine Accessories,²¹ you can refine RAV4 to reflect your personal style and further enhance your work life balance.

All RAV4 Toyota Genuine Accessories are ready to integrate seamlessly with its unique design while also accentuating the unmistakable RAV4 on-road presence.

Challenge the everyday, accessorise your RAV4 exactly the way you choose.



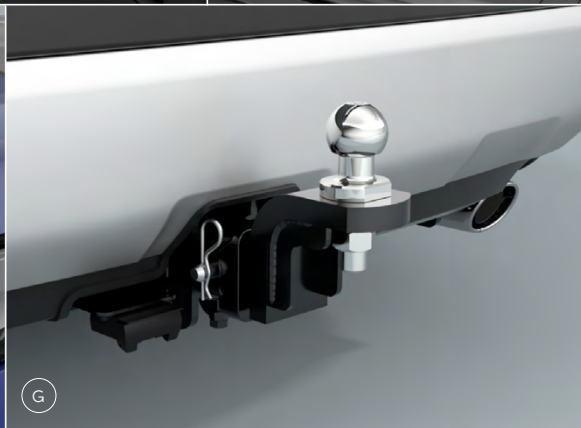
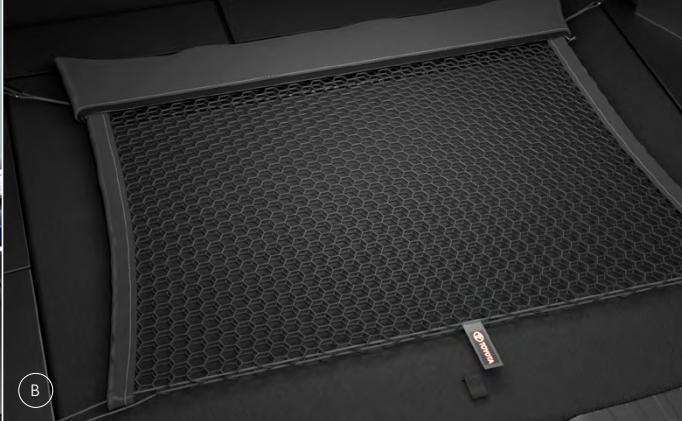
Cruiser AWD model shown accessorised with roof racks, bonnet protector – clear, headlamp covers, nudge bar – black, side steps, slimline weathershields and 18" alloy wheels. All accessories sold separately. Wash the exterior and underside of the vehicle with fresh water after driving through seawater to prevent damage.



- A Slimline weathershields
- B Nudge bar – black shown, also available in alloy
- C Seat covers
- D Side steps
- E Mudguards – GX models only
- F Headlamp protectors
- G Dash camera



Pre-production Edge model shown accessorised with roof racks, bicycle carrier, 19" alloy wheels, bonnet protector – tinted, side steps and dash camera. All accessories sold separately. Final specifications may differ from those depicted.



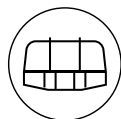
- A Ski carrier²² – roof rack sold separately.
Not applicable on GX models
- B Cargo net
- C Roof racks
- D Cargo barrier
- E All-weather cargo mat
- F Bonnet protector – tinted shown,
also available in clear
- G Tow bar, tow ball and trailer wiring
harness² – sold separately

Unlock it all



When you join the Toyota family, you get so much more than a new car feeling. You unlock a whole range of benefits to keep you moving now and well into the future.

Discover your Toyota lifetime of advantages at toyota.com.au/owners



Toyota Genuine Accessories²¹

Developed alongside the vehicle, this unique advantage allows Toyota to design accessories, so they integrate harmoniously with the vehicle structure and safety systems. For more information, visit toyota.com.au/accessories



Toyota Service Advantage²³

We'll keep the cost of your standard logbook service at a capped price for up to your first 3 or 5 years on the road, depending on the vehicle model. To find out your low capped service price, visit toyota.com.au/owners/service/service-pricing-calculator



Toyota Genuine Insurance²⁴

With Toyota Genuine Insurance you're not alone. Over 350,000²⁵ Toyota owners have made the same choice because they know their Toyota's in safe hands. For more information, visit toyotainsurance.com.au



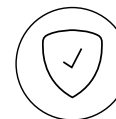
Toyota Access

Offering flexible finance options, lower monthly repayments²⁶ and a Guaranteed Future Value,²⁷ a Toyota Access Loan means you can drive the Toyota you want today, knowing the future is taken care of. When your loan ends, you have options to trade, keep or return your vehicle. For more information, visit toyota.com.au/toyota-access



Toyota Certified Pre-Owned Vehicles

Enjoy the reassurance that comes with a Toyota Certified Pre-Owned Vehicle. Including an additional 1-year Toyota-backed warranty,²⁸ full-service history and 90-point inspection by Toyota Technicians. For more information, visit toyota.com.au/certified



Toyota Warranty Advantage²⁹

Stick to your service schedule, and we'll extend your engine and driveline warranty from five to seven years, so you can drive stress-free for longer. For more information, visit toyota.com.au/owners/warranty

Disclaimers and Notice

- 1 Results achieved for RAV4 Hybrid GX 2WD Auto Petrol, RAV4 Hybrid GXL 2WD Auto Petrol, RAV4 Hybrid XSE 2WD Auto Petrol, RAV4 Hybrid Cruiser 2WD Auto Petrol in ADR81/02 combined drive cycle fuel consumption testing. Urban cycle results achieved 4.8/100km and extra urban cycle achieved 4.7/100km. Results produced in laboratory test conditions, using sample vehicles without fitment of accessories/customisation, and do not reflect real world driving. Figures should only be used for comparative purposes.
- 2 Towing capacity subject to regulatory requirements, and vehicle & equipment design limitations. Ask your dealer for more information, including Toyota Genuine Tow Bar capacity and availability.
- 3 Compatibility and functionality varies depending on device.
- 4 Bluetooth® is a registered trademark of Bluetooth SIG, Inc.
- 5 Requires compatible device, USB connection or Bluetooth® connection for vehicles fitted with wireless CarPlay®, mobile data, network reception and GPS signal. Mobile usage at user's cost. Apps subject to change. For details see toyota.com.au/connected
- 6 Android Auto™ is a trademark of Google LLC.
- 7 Requires compatible device, USB connection, mobile data, network reception and GPS signal. Mobile usage at user's cost. Apps subject to change. For details see toyota.com.au/connected
- 8 Product and company names are trademarks of their respective owners.
- 9 Only Qi-supported devices compatible. Refer to device manufacturer. May require additional purchase of accessory to support wireless charging.
- 10 Driver assist feature. Only operates under certain conditions. Check your Owner's Manual for explanation of limitations. Please drive safely.
- 11 Connected Services complimentary period ends 1 year from delivery date. Fees may apply thereafter. See toyota.com.au/connected/plans-packages. Not available outside Australia, if service disabled or terminated, or after 2033/Telstra 4G sunset (whichever comes first). Dependent on 3G/4G enabled DCM, GPS signal strength, mobile network coverage and other factors outside Toyota's control which can limit ability or functionality of system. Check toyota.com.au/connected or your Owner's Manual for explanation of limitations. Features subject to change. Please drive safely.
- 12 SOS – Driver assist feature only. Not a substitute for safe driving practices. Not available outside Australia, if service disabled or terminated, or after 2033/Telstra 4G sunset (whichever comes first). Only operates if vehicle's SOS button is pressed and vehicle ignition is on. Dependent on 3G/4G enabled DCM, GPS signal strength, mobile network coverage, call centre capabilities and other factors outside Toyota's control which can limit ability or functionality of system. Check your Owner's Manual or toyota.com.au/connected for explanation of limitations. Please drive safely.
- 13 ACN – Driver assist feature only. Not a substitute for safe driving practices. Not available outside Australia, if service disabled or terminated, or after 2033/Telstra 4G sunset (whichever comes first). Only activates if vehicle's DCM detects airbag deployment or impact sensor notification. Dependent on 3G/4G enabled DCM, GPS signal strength, mobile network coverage, operational related components and other factors outside Toyota's control which can limit the ability or functionality of system. Check your Owner's Manual or toyota.com.au/connected for explanation of limitations. Please drive safely.
- 14 SVT – Not available outside Australia, if service disabled or terminated, or after 2033/Telstra 4G sunset (whichever comes first). Dependent on sufficient battery power, 3G/4G enabled DCM, GPS signal strength, mobile network coverage, operational related components & other factors outside Toyota's control which can limit the ability or functionality of system. Owner/driver required to obtain Police report. Vehicle location information, if available, only provided to Police. Vehicle recovery not guaranteed. For details, visit toyota.com.au/connected/faq-support
- 15 Drive Pulse measures harsh cornering, fast acceleration & harsh braking, and provides drive pulse score based on these factors. Not to be used as general driver performance measure. Recent trips and drive pulse process may take up to 48 hours to appear in the myToyota Connect app. For more details, see toyota.com.au/connected/driving-insights/recent-trips-drive-pulse
- 16 This distance is approximate only and may vary due to driver behaviour, vehicle load, vehicle usage and traffic conditions. Please drive responsibly.
- 17 Vehicle Status functionality varies for different Connected Vehicle models. Please check toyota.com.au/connected to confirm functionality.
- 18 Requires activated DCM (until the earlier of 2033 or Telstra 4G sunset), compatible device, app installation/connection, third party info, mobile data, Australian network reception, GPS signal, enabled push notifications and other factors outside Toyota's control which can limit functionality. Mobile usage at user's cost. Features vary depending on vehicle

IMPORTANT NOTICE – PLEASE READ: Toyota Australia uses its best endeavours to ensure material is correct when published. Check with your authorised Toyota Dealer when ordering to ensure the vehicle with your chosen specifications, equipment and colour is available and can be delivered within the timeframe suitable to you. When ordering accessories, check with your authorised Toyota Dealer to ensure the accessory's design, features and colours are available and fit your vehicle. Ensure the mass of your load does not exceed the maximum allowable individual axle capacity, Gross Vehicle Mass and/or Gross Combined Mass of the vehicle. Refer to toyota.com.au for further details. Colours displayed are a guide only and may vary from actual colours due to printing/display processes. Certain accessories when fitted will require the removal of standard equipment, which may be retained

model & subscription choice, and subject to change. For details see

- 19 toyota.com.au/connected/connect-app
Coverage varies based on vehicle location.
- 20 Toyota Australia reserves the right to vary or discontinue the current interior and exterior colours, trims and colour/trim/model combinations. Colours and trims displayed are a guide only and may vary from actual colours due to printing/display process. See your Toyota Dealer to confirm availability when ordering your vehicle. Paint featured is an optional additional cost.
- 21 Toyota Genuine Accessories are not applicable to all models/grades. See your Toyota dealer to confirm Toyota Genuine Accessories suitable for your vehicle prior to ordering, as specifications, applicability, availability and fitment requirements may change over time. Consider combined mass of load and accessories to ensure gross vehicle mass limits are not exceeded. Refer to toyota.com.au/vehiclepayload for information. Fitment of certain accessories may require recalibration, relocation or removal of standard equipment (which may be retained by Toyota). Toyota Australia uses its best endeavours to ensure material is accurate at the time of publishing. Colours depicted are a guide only and may vary from actual due to the print/display process. Toyota Australia reserves the right to change and/or discontinue, without notice, prices, colours, materials, equipment and specifications. To the extent permitted by law, Toyota Australia will not be liable for any damage or loss incurred from relying on the information and images contained in this material.
- 22 Approved parts and accessories supplied by Toyota have different warranty periods depending upon manufacturer's specifications. T&Cs apply. See toyota.com.au for details. These warranties do not limit and may not necessarily exceed your rights under the Australian Consumer Law.
- 23 Applies to standard scheduled logbook servicing (normal operating conditions for a specified number of years/max kms (whichever occurs first) up to a maximum number of services. Excludes Government and Rental vehicles. For details see your Toyota Dealer or visit toyota.com.au/advantage
- 24 Terms and conditions apply. This advice is general in nature and does not take into account your objectives, financial situation or needs. Before making a decision to purchase any of the insurance products you should consider the appropriateness of the advice taking into account your own objectives, financial situation and needs and refer to the current PDS and Target Market Determination for the relevant product available from participating Dealers, via our website at toyotainsurance.com.au or by calling 137 200. Toyota Car Insurance purchased in a dealership or via the Toyota Insurance National Customer Solutions Centre is facilitated by Toyota Finance Australia Limited ABN 48 002 435 181, AFSL and Australian Credit Licence 392536 as agent for, and on behalf of, the insurer. The insurer of Toyota Car Insurance is Aioi Nissay Dowa Insurance Company Australia Pty Ltd ABN 11 132 524 282, AFSL 443540 (Adica). If Toyota Car Insurance is purchased online, the issuer and insurer is Adica.
- 25 This figure represents the total number of Toyota vehicles that have been insured by Toyota Insurance as at November 2021.
- 26 Lower monthly repayments compared to a similar term with no Guaranteed Future Value (GFV) or equivalent balloon final payment. Total interest charges will be higher if a GFV or balloon final payment is selected.
- 27 Guaranteed Future Value (GFV) is the minimum value of your new or approved demonstrator Toyota at the end of your finance contract, as determined by Toyota Finance subject to fair wear and tear and agreed kilometres being met. Ask your dealers for more information. Approved applicants only. T&Cs apply. Toyota Finance Australia Limited ABN 48 002 435 181, AFSL and Australian Credit Licence 392536.
- 28 Applicable to pre-owned vehicles purchased as a Toyota Certified Pre-Owned (TCPO) vehicle on or after 01/01/2022. TCPO 2022 Warranty expires 1 year after sale, or 1 year after the current New Vehicle Warranty expires (if applicable), or 10 years from date of registration in original owner's name, or at 160,000kms (whichever occurs first). TCPO Warranty does not apply to vehicles used for commercial purpose (eg taxi or rideshare). See toyota.com.au/tcpowarranty for T&Cs. This warranty does not limit and may not necessarily exceed your rights under the Australian Consumer Law.
- 29 The Toyota Warranty Advantage Extended Engine and Driveline coverage is for 7 years from delivery, provided your vehicle is properly serviced and maintained per its Warranty and Service Book. Excludes vehicles used for a commercial purpose, such as taxis, hire vehicles and vehicles transporting people or goods for payment including rideshare. See toyota.com.au/owners/warranty for details. This warranty does not limit and may not necessarily exceed your rights under the Australian Consumer Law.

by Toyota Australia or your Toyota Dealer. Toyota Australia reserves the right to change, without notice, prices, colours, materials, equipment, specifications and discontinue colours/models. To the extent permitted by law, Toyota Australia will not be liable for any damage, loss or expense incurred as a result of reliance on this material in any way. Distributed nationally (other than in Western Australia) by Toyota Motor Corporation Australia Limited ABN 64 009 686 097, 155 Bertie St, Port Melbourne 3207. Material distributed in Western Australia by or on behalf of Prestige Motors Pty Ltd (for vehicles) and by Eastpoint Pty Ltd (for parts/accessories). Toyota Australia makes no warranties regarding (and will not be liable for) accuracy of materials distributed in Western Australia. PROOF HQ: T2024-021792. GT0-008707. VERSION: OCTOBER 2024.